

Francesco Bendusi

Opera nova de balli

à quattro

Edited by Allen Garvin

Altus
(treble octave clef)

Hawthorne Early Music
FB-1
20130704

©2013 — Allen Garvin
Some rights reserved

Hawthorne Early Music Publications, Dallas, TX

This work is licensed under the Creative Commons Attribution-ShareAlike 3.0 US License. To view a copy of this license, visit <http://creativecommons.org/licenses/by-sa/3.0/us> or send a letter to Creative Commons, 444 Castro Street, Suite 900, Mountain View, California, 94041, USA.

The typeface used is Liberation Serif, licensed under the GNU General Public License. This document was typeset using XeLaTeX and Lilypond.

10 09 08 07 06 05 04 03 02 01 19 18 17 16 15 14 13

Pass'e mezo ditto il romano

Musical score for 'Pass'e mezo ditto il romano' in G-clef, C-clef, and F-clef staves. The piece is in 6/8 time. The first staff starts with a treble clef and a common time signature. The second staff starts with a C-clef. The third staff starts with an F-clef. Measure numbers 5, 10, and 15 are indicated above the staves. The piece ends with a double bar line and a sharp sign on the F-clef staff.

Moschetta

Musical score for 'Moschetta' in G-clef, C-clef, and F-clef staves. The piece is in 6/8 time. The first staff starts with a treble clef and a common time signature. The second staff starts with a C-clef. The third staff starts with an F-clef. Measure numbers 5, 10, 15, and 20 are indicated above the staves. The piece ends with a double bar line and a sharp sign on the F-clef staff.

Desiderata

Musical score for 'Desiderata' in G-clef, C-clef, and F-clef staves. The piece is in 6/8 time. The first staff starts with a treble clef and a common time signature. The second staff starts with a C-clef. The third staff starts with an F-clef. Measure numbers 5, 10, and 15 are indicated above the staves. The piece ends with a double bar line and a sharp sign on the F-clef staff.

Pietoso

Musical score for the piece "Pietoso". It consists of three staves of music in treble clef with a common time signature. The first staff begins with a double bar line and a fermata over the first note, followed by a sequence of notes. A measure rest of 5 is indicated above the staff. The second staff continues the melody with a measure rest of 10. The third staff concludes the piece with a measure rest of 15, a 6/2 time signature change, and a final double bar line.

Speranza

Musical score for the piece "Speranza". It consists of four staves of music in treble clef with a common time signature. The first staff begins with a double bar line and a fermata over the first note, followed by a sequence of notes. A measure rest of 5 is indicated above the staff. The second staff continues the melody with a measure rest of 10. The third staff continues with a measure rest of 15. The fourth staff concludes the piece with a measure rest of 20, a 6/2 time signature change, and a final double bar line.

La mala vecchie

Musical score for the piece "La mala vecchie". It consists of two staves of music in treble clef with a common time signature. The first staff begins with a double bar line and a fermata over the first note, followed by a sequence of notes. A measure rest of 5 is indicated above the staff. The second staff continues the melody with a measure rest of 10 and concludes with a final double bar line.



Il stocco



Doi stanchi



La falilela

Musical score for the song 'La falilela'. It consists of three staves of music in G major, 6/8 time. The first staff starts with a treble clef and a 'g' below the staff, indicating the starting pitch. The second staff continues the melody. The third staff concludes with a double bar line and a sharp sign. Measure numbers 5, 10, and 15 are indicated above the staves.

La bruna

Musical score for the song 'La bruna'. It consists of three staves of music in G minor, 6/8 time. The first staff starts with a treble clef and a 'g' below the staff, indicating the starting pitch. The second staff continues the melody with a sharp sign above the first measure. The third staff concludes with a double bar line and a sharp sign. Measure numbers 5, 10, and 15 are indicated above the staves.

E dove vastu o bon solda

Musical score for the song 'E dove vastu o bon solda'. It consists of three staves of music in G minor, 6/8 time. The first staff starts with a treble clef and a 'g' below the staff, indicating the starting pitch. The second staff continues the melody. The third staff concludes with a double bar line and a sharp sign. Measure numbers 5, 10, and 15 are indicated above the staves.

Chi non ha martello

Musical score for the song 'Chi non ha martello'. It consists of one staff of music in G minor, 6/8 time. The staff starts with a treble clef and a 'g' below the staff, indicating the starting pitch. Measure number 5 is indicated above the staff.

Musical score for 'Opera nova de balli (altus)' in G major, 4/4 time. The score consists of three staves. The first staff contains measures 1-10, with a measure rest of 8 measures at the beginning. The second staff contains measures 11-15, with a measure rest of 8 measures at the beginning. The third staff contains measures 16-20, with a measure rest of 8 measures at the beginning. The key signature changes to F major (one flat) at measure 16. The piece ends with a double bar line and a sharp sign (#) at the end of the third staff.

Incognito

Musical score for 'Incognito' in G major, 4/4 time. The score consists of four staves. The first staff contains measures 1-5, with a measure rest of 8 measures at the beginning. The second staff contains measures 6-10, with a measure rest of 8 measures at the beginning. The third staff contains measures 11-15, with a measure rest of 8 measures at the beginning. The fourth staff contains measures 16-25, with a measure rest of 8 measures at the beginning. The piece ends with a double bar line.

Bella foresta

Musical score for 'Bella foresta' in G major, 4/4 time. The score consists of four staves. The first staff contains measures 1-5, with a measure rest of 8 measures at the beginning. The second staff contains measures 6-10, with a measure rest of 8 measures at the beginning. The third staff contains measures 11-15, with a measure rest of 8 measures at the beginning. The fourth staff contains measures 16-20, with a measure rest of 8 measures at the beginning. The piece ends with a double bar line.

Galante

Musical score for 'Galante' in 3/8 time. The score consists of three staves. The first staff begins with a treble clef, a key signature of one sharp (F#), and a common time signature (C). The melody starts with a dotted quarter note, followed by eighth notes. Measure numbers 5, 10, and 15 are indicated above the staff. A '6/2' time signature change is shown at the end of the third staff.

Fusta

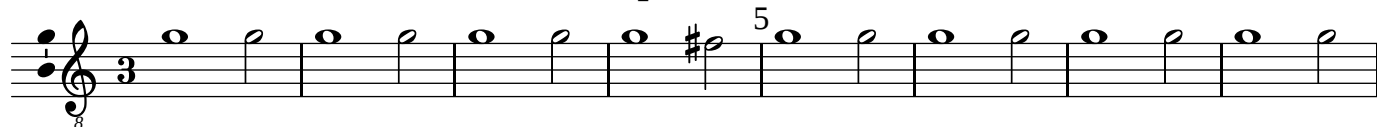
Musical score for 'Fusta' in 3/8 time. The score consists of three staves. The first staff begins with a treble clef, a key signature of one sharp (F#), and a common time signature (C). The melody features eighth notes and quarter notes. Measure numbers 5, 10, and 15 are indicated above the staff. A '6/2' time signature change is shown at the end of the third staff.

Animoso

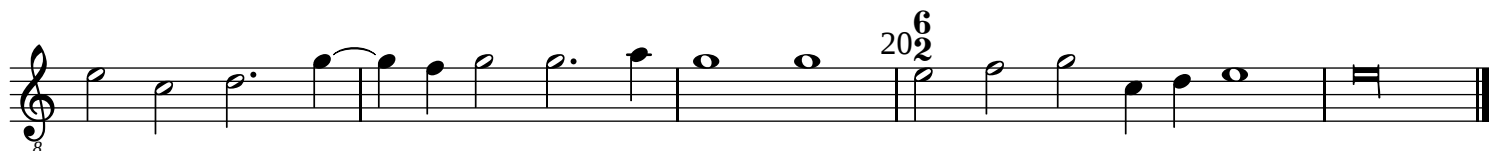
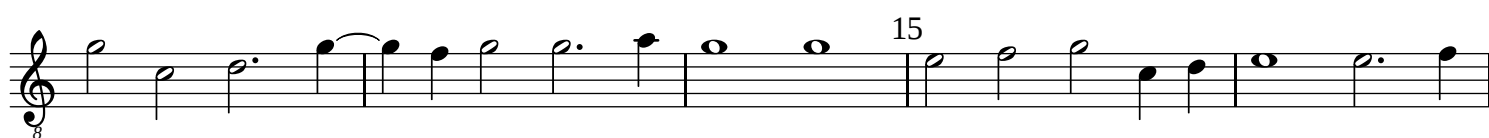
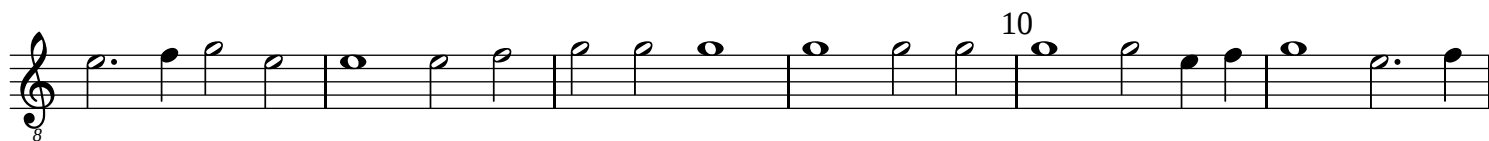
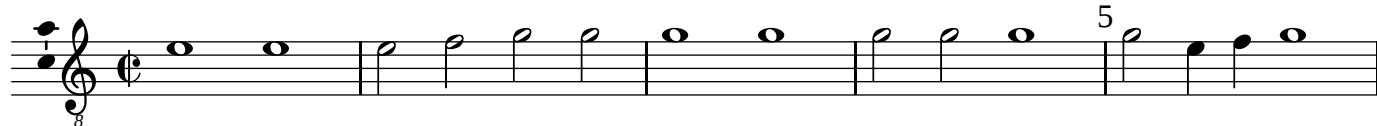
Musical score for 'Animoso' in 3/8 time. The score consists of three staves. The first staff begins with a treble clef, a key signature of one sharp (F#), and a common time signature (C). The melody consists of eighth notes and quarter notes. Measure numbers 5, 10, and 15 are indicated above the staff.



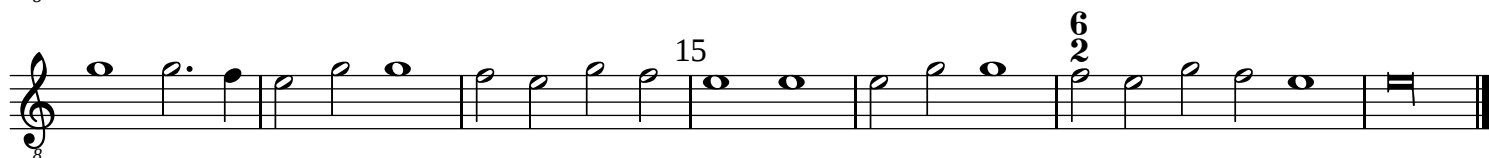
Cortesa padoana



Bandera



Gioia



La giovenetta

Musical score for 'La giovenetta' in G major, 4/4 time. The score consists of four staves of music. The first staff begins with a treble clef, a key signature of one flat (F major), and a common time signature. The melody starts on G4 and moves stepwise up to D5. Measure numbers 5, 10, 15, and 20 are indicated above the staff. A sharp sign (#) appears above the note in measure 10. The piece concludes with a double bar line.

Il ben ti vegna

Musical score for 'Il ben ti vegna' in G major, 4/4 time. The score consists of five staves of music. The first staff begins with a treble clef, a key signature of one flat (F major), and a common time signature. The melody starts on G4 and moves stepwise up to D5. Measure numbers 5, 10, 15, and 20 are indicated above the staff. A sharp sign (#) appears above the note in measure 10. The piece concludes with a double bar line.

Pass'e mezo ditto il compasso

Musical score for 'Pass'e mezo ditto il compasso' in G major, 4/4 time. The score consists of two staves of music. The first staff begins with a treble clef, a key signature of one flat (F major), and a common time signature. The melody starts on G4 and moves stepwise up to D5. Measure numbers 5 and 10 are indicated above the staff. A sharp sign (#) appears above the note in measure 5. The piece concludes with a double bar line.

Musical staff for Altus. The staff is in treble clef with a key signature of one flat (B-flat). It contains a melodic line with a sharp sign above the fifth measure. A rehearsal mark '8' is at the beginning, and '15' is at the end.

Violla

Musical staff for Viola. The staff is in treble clef with a key signature of one flat. It contains a melodic line. A rehearsal mark '5' is at the end.

Musical staff for Viola. The staff is in treble clef with a key signature of one flat. It contains a melodic line. Rehearsal marks '10' and '6/2' are present.