

Georg Engelmann

Paduanas & Galiardas I

a 5 vocum

Edited by Allen Garvin

Voice 2 (treble clef)

Hawthorne Early Music

GE-1

2023-11-24

©2023 — Allen Garvin
Some rights reserved

Hawthorne Early Music Publications, Dallas, TX

This work is licensed under the Creative Commons Attribution-NonCommercial 4.0 US License.
To view a copy of this license, visit <https://creativecommons.org/licenses/by-nc/4.0/deed.en>

The typeface used is Liberation Serif, licensed under the GNU General Public License. This document was typeset using XeLaTeX and Lilypond.

10 09 08 07 06 05 04 03 02 01 19 18 17 16 15 14 13

No restrictions at all are placed on public performance, commercial or not, from Hawthorne editions. No credit or attribution is required for performances.

For other free music from Hawthorne Publications, see <https://dfwviols.com>

Paduana Ancon

Musical score for Paduana Ancon, measures 1-25. The piece is in 4/4 time and B-flat major. It consists of five staves of music. Measure numbers 5, 10, 15, 20, and 25 are indicated above the staves. The score ends with a double bar line and repeat dots.

Galliarde Zingi

Musical score for Galliarde Zingi, measures 1-45. The piece is in 3/2 time and B-flat major. It consists of seven staves of music. Measure numbers 5, 10, 15, 20, 25, 30, 35, 40, and 45 are indicated above the staves. The score ends with a double bar line and repeat dots.

Musical score for Voice II, measures 25-47. The score consists of three staves of music in a 4/4 time signature. Measure numbers 25, 30, 35, 40, and 47 are indicated above the notes. The music features a mix of eighth and sixteenth notes, with some rests and a repeat sign at the end of the third staff.

Paduana Seose

Musical score for Paduana Seose, measures 1-25. The score consists of nine staves of music in a 4/4 time signature. Measure numbers 5, 10, 15, 20, and 25 are indicated above the notes. The music features a mix of eighth and sixteenth notes, with some rests and a repeat sign at the end of the ninth staff.

Voice II
Galiarda Affar

5

10

15

1

20

25

30

35

40

45

50

Paduana Hermoso

5

10

Musical score for Voice II, measures 10-35. The score is written in a single treble clef staff. It begins at measure 10 and ends at measure 35. The music features a variety of rhythmic patterns, including eighth and sixteenth notes, and rests. There are repeat signs at measures 11, 25, and 35. Measure numbers 10, 15, 20, 25, 30, and 35 are indicated above the staff.

Galliarda Pracell

Musical score for Galliarda Pracell, measures 1-35. The score is written in a single treble clef staff with a 3/2 time signature. It begins at measure 1 and ends at measure 35. The music features a variety of rhythmic patterns, including eighth and sixteenth notes, and rests. There are repeat signs at measures 10, 25, and 35. Measure numbers 5, 10, 15, 20, 25, 30, and 35 are indicated above the staff.

Voice II
Paduana Tesser

Musical score for Paduana Tesser, Voice II. The score consists of six staves of music in 2/4 time. The key signature has one sharp (F#). The piece begins with a treble clef and a common time signature. The first staff contains measures 1-4. The second staff contains measures 5-8. The third staff contains measures 9-12, with a repeat sign at the beginning. The fourth staff contains measures 13-16, with a repeat sign at the end. The fifth staff contains measures 17-20, with a repeat sign at the beginning. The sixth staff contains measures 21-25, with a repeat sign at the end.

Galliarda Volane

Musical score for Galliarda Volane. The score consists of three staves of music in 3/8 time. The key signature has one sharp (F#). The piece begins with a treble clef and a 3/8 time signature. The first staff contains measures 1-5. The second staff contains measures 6-10. The third staff contains measures 11-15, with a repeat sign at the beginning.

Musical score for Voice II, measures 20-35. The score is written on three staves in treble clef. Measure 20 is marked above the first staff. Measure 25 is marked above the second staff. Measure 30 is marked above the second staff. Measure 35 is marked above the third staff. The music consists of a series of eighth and sixteenth notes, with some rests and repeat signs.

Paduana Antinos

Musical score for Paduana Antinos, measures 1-25. The score is written on seven staves in treble clef. The key signature has one flat (B-flat) and the time signature is 4/4. Measure 5 is marked above the second staff. Measure 10 is marked above the third staff. Measure 15 is marked above the fourth staff. Measure 20 is marked above the fifth staff. Measure 25 is marked above the sixth staff. The music features a mix of eighth, sixteenth, and quarter notes, with some rests and repeat signs.

Voice II
Galliarda Navacar

5

10

15

20

25

30

35

40

45

Paduana Tremel

5

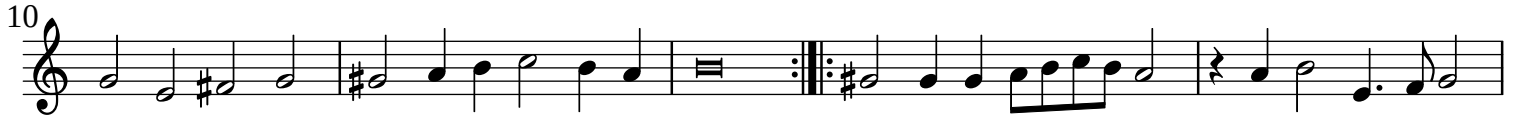
10

Musical score for Voice II, measures 1-30. The score is written in a single system with four staves. The key signature has one flat (B-flat), and the time signature is common time (C). Measure numbers 15, 20, and 25 are indicated above the staves. The music features a variety of note values including quarter, eighth, and sixteenth notes, along with rests and repeat signs.

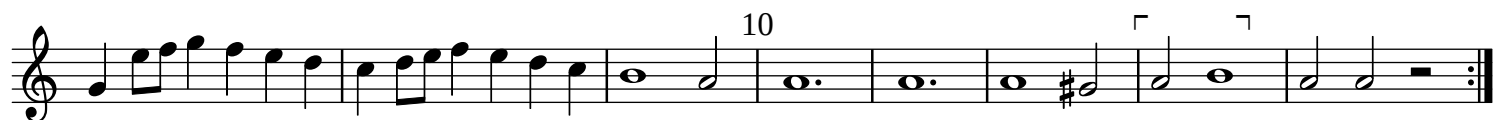
Galiarda Belul

Musical score for Galiarda Belul, measures 1-35. The score is written in a single system with six staves. The key signature has one flat (B-flat), and the time signature is 3/2. Measure numbers 5, 10, 15, 20, 25, and 30 are indicated above the staves. The music includes various rhythmic patterns, repeat signs, and first endings marked with the number '1'.

Voice II
Paduana Basse



Galliarda Costapo



Musical score for Voice II, measures 25-40. The score is written on three staves in treble clef. Measure 25 is marked above the first staff. Measure 30 is marked above the second staff. Measure 35 is marked above the second staff. Measure 40 is marked above the third staff. The music consists of eighth and sixteenth notes, with some rests and repeat signs.

Paduana Sire

Musical score for Paduana Sire, measures 1-40. The score is written on eight staves in treble clef, 4/4 time signature. Measure 1 is marked above the first staff. Measure 5 is marked above the second staff. Measure 10 is marked above the third staff. Measure 15 is marked above the fourth staff. Measure 20 is marked above the fifth staff. Measure 25 is marked above the sixth staff. Measure 30 is marked above the seventh staff. Measure 35 is marked above the eighth staff. The music features a mix of eighth, sixteenth, and quarter notes, with many rests and repeat signs.

Voice II
Galliarde Sunon

Musical score for Galliarde Sunon, Voice II. The score is written in 3/4 time and consists of six staves of music. The key signature has one sharp (F#). The piece is marked with measure numbers 5, 10, 15, 20, 25, 30, 35, and 40. It features a variety of rhythmic patterns, including eighth and sixteenth notes, and rests. The piece concludes with a double bar line and repeat dots.

Paduana Moroscopoh

Musical score for Paduana Moroscopoh. The score is written in 4/2 time and consists of four staves of music. The key signature has one sharp (F#). The piece is marked with measure numbers 5, 10, and 15. It features a variety of rhythmic patterns, including eighth and sixteenth notes, and rests. The piece concludes with a double bar line and repeat dots.

Musical score for Voice II, measures 1-25. The score is written on four staves in treble clef. Measure numbers 20 and 25 are indicated above the staves. The music features a mix of eighth and sixteenth notes, with some rests and repeat signs.

Galliarda Cabra

Musical score for Galliarda Cabra, measures 1-45. The score is written on six staves in treble clef, 3/2 time signature. Measure numbers 5, 10, 15, 20, 25, 30, 35, and 40 are indicated above the staves. The music is characterized by rhythmic patterns and repeat signs.

Voice II
Courante Laraxa

5

1. 2. 10

15

1. 2. 20

1 25

30

1. 2. 35