

# Georg Engelmann

## Paduanas & Galiardas I

a 5 vocum

Edited by Allen Garvin

Voice 3 (treble octave clef)

Hawthorne Early Music

GE-1

2023-11-24

©2023 — Allen Garvin  
Some rights reserved

Hawthorne Early Music Publications, Dallas, TX

This work is licensed under the Creative Commons Attribution-NonCommercial 4.0 US License.  
To view a copy of this license, visit <https://creativecommons.org/licenses/by-nc/4.0/deed.en>

The typeface used is Liberation Serif, licensed under the GNU General Public License. This document was typeset using XeLaTeX and Lilypond.

10 09 08 07 06 05 04 03 02 01      19 18 17 16 15 14 13

No restrictions at all are placed on public performance, commercial or not, from Hawthorne editions. No credit or attribution is required for performances.

For other free music from Hawthorne Publications, see <https://dfwviols.com>

# Paduana Ancon

Musical score for Paduana Ancon, measures 1-25. The piece is in 4/2 time and B-flat major. It begins with a treble clef and a common time signature. The melody features a mix of eighth and quarter notes, with some slurs and a fermata over the final note of the first measure. Measure numbers 5, 10, 15, 20, and 25 are indicated above the staff. The piece concludes with a double bar line and repeat dots.

# Galliarada Zingi

Musical score for Galliarada Zingi, measures 1-45. The piece is in 3/2 time and B-flat major. It begins with a treble clef and a common time signature. The melody is characterized by a steady eighth-note rhythm. Measure numbers 5, 10, 15, 20, 25, 30, 35, 40, and 45 are indicated above the staff. The piece concludes with a double bar line and repeat dots.

# Paduana Doaga

8

5

10

8

15

8

20

25

# Galliarda Zibotte

8

5

10

15

Musical score for Voice III (transposing treble clef), measures 8 to 40. The score consists of four staves of music. Measure numbers 20, 25, 30, and 35 are indicated above the staves. The music is written in a transposing treble clef and features a variety of rhythmic patterns, including eighth and sixteenth notes, and rests.

## Paduana Seose

Musical score for Paduana Seose, measures 5 to 25. The score consists of four staves of music. Measure numbers 5, 10, 15, 20, and 25 are indicated above the staves. The music is written in a transposing treble clef and features a variety of rhythmic patterns, including eighth and sixteenth notes, and rests.

Voice III (transposing treble clef)

## Galiarda Affar

Musical score for Galiarda Affar, Voice III (transposing treble clef). The score consists of seven staves of music in 3/4 time. The key signature has one sharp (F#). The music features a mix of quarter, eighth, and sixteenth notes, with some rests. Measure numbers 5, 10, 15, 20, 25, 30, 35, 40, 45, and 50 are indicated above the staves. The piece concludes with a double bar line and repeat dots.

## Paduana Hermoso

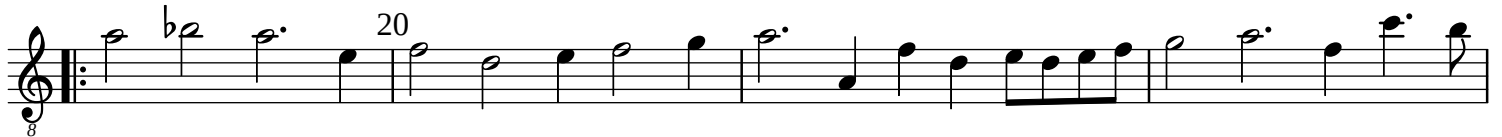
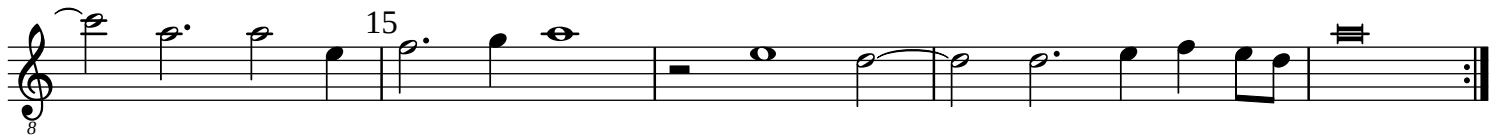
Musical score for Paduana Hermoso, Voice III (transposing treble clef). The score consists of two staves of music in 4/4 time. The key signature has one sharp (F#). The music features a mix of quarter, eighth, and sixteenth notes, with some rests. Measure numbers 5 and 8 are indicated above the staves. The piece concludes with a double bar line and repeat dots.

Musical score for Voice III (transposing treble clef) consisting of five staves. The notation includes treble clefs, a key signature of one sharp (F#), and a 2/3 time signature. Measure numbers 10, 15, 20, 25, 30, and 35 are indicated above the staves. The score features various rhythmic patterns, including eighth and sixteenth notes, and rests. A repeat sign is present at the end of the first staff.

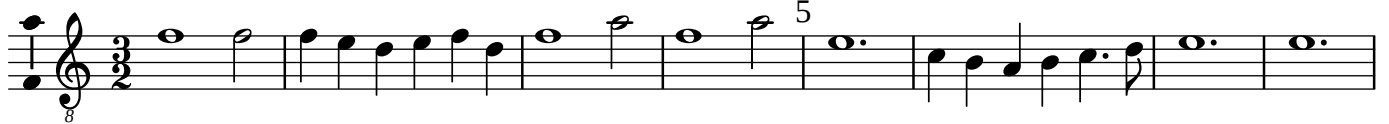
Galliarda Pracell

Musical score for Galliarda Pracell consisting of five staves. The notation includes a treble clef, a key signature of one sharp (F#), and a 3/4 time signature. Measure numbers 5, 10, 15, 20, 25, 30, and 35 are indicated above the staves. The score features various rhythmic patterns, including eighth and sixteenth notes, and rests. A repeat sign is present at the end of the first staff.

## Paduana Tesser



## Galliarde Volane





Musical notation for Voice III (transposing treble clef), measures 1-36. The score consists of two staves. The first staff contains measures 1 through 25, with measure numbers 20 and 25 indicated above the staff. The second staff contains measures 26 through 36, with measure numbers 30 and 35 indicated above the staff. The music is written in a single system with a treble clef and a key signature of one flat.

### Paduana Antinos

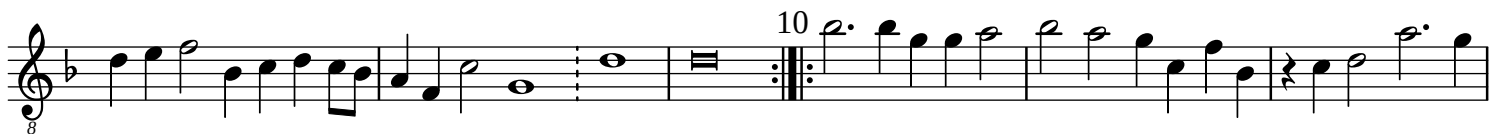
Musical notation for Paduana Antinos, measures 1-25. The score consists of seven staves. The first staff contains measures 1 through 4, with a treble clef and a key signature of one flat. The second staff contains measures 5 through 9, with a measure number 5 indicated at the beginning. The third staff contains measures 10 through 14, with a measure number 10 indicated at the beginning. The fourth staff contains measures 15 through 19, with a measure number 15 indicated at the beginning. The fifth staff contains measures 20 through 24, with a measure number 20 indicated at the beginning. The sixth staff contains measures 25 through 29, with a measure number 25 indicated at the beginning. The seventh staff contains measures 30 through 34, with a measure number 25 indicated at the beginning. The music is written in a single system with a treble clef and a key signature of one flat.

Voice III (transposing treble clef)

## Galiarda Navacar



## Paduana Tremel

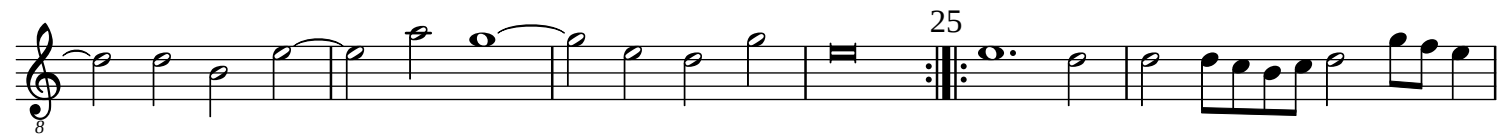
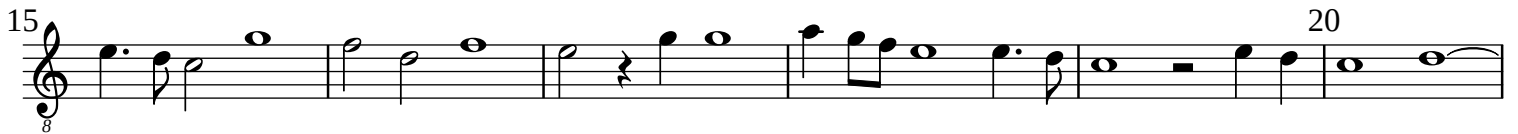
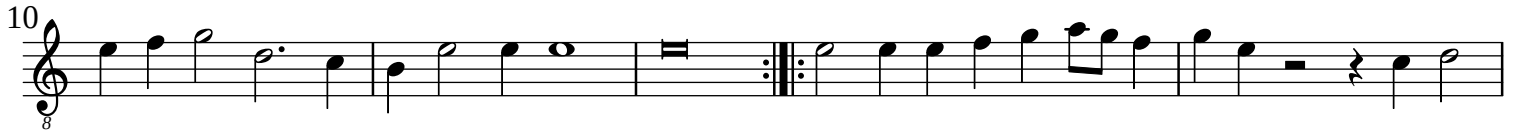


Musical score for Voice III (transposing treble clef) in B-flat major, 3/4 time. The score consists of three staves. The first staff contains measures 8 through 15, ending with a double bar line and repeat dots. The second staff contains measures 16 through 20, starting with a repeat sign. The third staff contains measures 21 through 25, ending with a double bar line and repeat dots.

### Galliarda Belul

Musical score for Galliarda Belul in B-flat major, 3/4 time. The score consists of seven staves. The first staff contains measures 5 through 8, ending with a double bar line and repeat dots. The second staff contains measures 9 through 15, ending with a double bar line and repeat dots. The third staff contains measures 16 through 20, ending with a double bar line and repeat dots. The fourth staff contains measures 21 through 25, ending with a double bar line and repeat dots. The fifth staff contains measures 26 through 30, ending with a double bar line and repeat dots. The sixth staff contains measures 31 through 35, ending with a double bar line and repeat dots.

## Paduana Basse



## Galliarde Costapo



Musical score for Voice III (transposing treble clef) in 2/4 time. The score consists of three staves. The first staff contains measures 1 through 25, with a slur over measures 18-20. The second staff contains measures 26 through 30, with a repeat sign at the beginning. The third staff contains measures 31 through 40, with a repeat sign at the end.

### Paduana Sire

Musical score for Paduana Sire in 2/4 time. The score consists of eight staves. The first staff contains measures 1 through 4. The second staff contains measures 5 through 14, with a repeat sign at the end. The third staff contains measures 15 through 20, with a repeat sign at the end. The fourth staff contains measures 21 through 25, with a repeat sign at the end. The fifth staff contains measures 26 through 30, with a repeat sign at the end. The sixth staff contains measures 31 through 35, with a repeat sign at the end.

## Galliarda Sunon

Musical score for Galliarda Sunon, Voice III (transposing treble clef). The piece is in 3/2 time and consists of 44 measures. The score is written on five staves. Measure numbers 8, 10, 15, 20, 25, 30, 35, and 40 are indicated above the staves. The music features a mix of eighth and sixteenth notes, with some measures containing rests. There are repeat signs at measures 15 and 30.

## Paduana Moroscopoh

Musical score for Paduana Moroscopoh, Voice III (transposing treble clef). The piece is in 2/4 time and consists of 10 measures. The score is written on two staves. Measure numbers 5 and 10 are indicated above the staves. The music features a mix of eighth and sixteenth notes, with some measures containing rests. There is a repeat sign at measure 10.

Musical score for Voice III (transposing treble clef). The score consists of three staves of music. The first staff begins with a treble clef, a common time signature, and a key signature of one flat. The music features a series of notes, including a dotted quarter note followed by an eighth rest, and a measure with a whole note and a fermata. Measure numbers 15, 20, and 25 are indicated above the staves. The second staff contains a repeat sign and a key signature change to one sharp. The third staff concludes with a double bar line and repeat dots.

## Galliarda Cabra

Musical score for Galliarda Cabra. The score consists of four staves of music. The first staff begins with a treble clef, a 3/2 time signature, and a key signature of one flat. The music features a series of notes, including a dotted quarter note followed by an eighth rest, and a measure with a whole note and a fermata. Measure numbers 5, 10, 15, 20, 25, 30, 35, and 40 are indicated above the staves. The score includes repeat signs and fermatas throughout.

# Courante Laraxa

8

5

1. 2.

10

15

20

25

30

35