

# Georg Engelmann

## Paduanas & Galiardas I

a 5 vocum

Edited by Allen Garvin

Voice 5 (bass clef)

Hawthorne Early Music

GE-1

2023-11-24

©2023 — Allen Garvin  
Some rights reserved

Hawthorne Early Music Publications, Dallas, TX

This work is licensed under the Creative Commons Attribution-NonCommercial 4.0 US License.  
To view a copy of this license, visit <https://creativecommons.org/licenses/by-nc/4.0/deed.en>

The typeface used is Liberation Serif, licensed under the GNU General Public License. This document was typeset using XeLaTeX and Lilypond.

10 09 08 07 06 05 04 03 02 01      19 18 17 16 15 14 13

No restrictions at all are placed on public performance, commercial or not, from Hawthorne editions. No credit or attribution is required for performances.

For other free music from Hawthorne Publications, see <https://dfwviols.com>

# Paduana Ancon

Musical score for Paduana Ancon, bass clef, 4/2 time signature. The score consists of four staves of music. The first staff starts with a treble clef and a key signature of one flat, then changes to a bass clef. Measure numbers 5, 10, 15, 20, and 25 are indicated above the staves. The piece ends with a double bar line and repeat dots.

# Galliarde Zingi

Musical score for Galliarde Zingi, bass clef, 3/2 time signature. The score consists of five staves of music. The first staff starts with a treble clef and a key signature of one flat, then changes to a bass clef. Measure numbers 5, 10, 15, 20, 25, 30, 35, 40, and 45 are indicated above the staves. The piece ends with a double bar line and repeat dots.

Voice V  
Paduana Doaga

Galliarda Zibotte

Paduana Seose

Voice V  
Galliarde Affar

Musical score for Galliarde Affar, Voice V. The piece is in 3/2 time and consists of 50 measures. The notation is in bass clef with a key signature of one sharp (F#). The score is divided into five systems of ten measures each, with measure numbers 5, 10, 15, 20, 25, 30, 35, 40, 45, and 50 indicated above the staves. The piece concludes with a double bar line and repeat dots.

Paduana Hermoso

Musical score for Paduana Hermoso, Voice V. The piece is in 4/2 time and consists of 35 measures. The notation is in bass clef with a key signature of one sharp (F#). The score is divided into seven systems of five measures each, with measure numbers 5, 10, 15, 20, 25, 30, and 35 indicated above the staves. The piece concludes with a double bar line and repeat dots.

Voice V  
Galiarda Pracell

5

10

15

20

25

30

35

Paduana Tesser

5

10

15

20

25

Galiarda Volane

5

Musical score for Voice V, measures 10-35. The score is written in bass clef with a key signature of one flat (B-flat). It consists of three staves of music. Measure numbers 10, 15, 20, 25, 30, and 35 are indicated above the staves. The music features a mix of quarter, eighth, and sixteenth notes, with some rests and repeat signs.

### Paduana Antinos

Musical score for Paduana Antinos, measures 1-25. The score is written in bass clef with a key signature of one flat (B-flat) and a 4/2 time signature. It consists of five staves of music. Measure numbers 5, 10, 15, 20, and 25 are indicated above the staves. The music is characterized by rhythmic patterns, including eighth and sixteenth notes, and features repeat signs and a double bar line at the end.

Voice V  
Galliarda Navacar

Musical score for Galliarda Navacar, Voice V, in 3/2 time signature. The score consists of six staves of music. Measure numbers 5, 10, 15, 20, 25, 30, 35, 40, and 45 are marked above the notes. The piece concludes with a double bar line and repeat dots at the end of the sixth staff.

Paduana Tremel

Musical score for Paduana Tremel, Voice V, in 4/2 time signature. The score consists of four staves of music. Measure numbers 5, 10, 15, 20, and 25 are marked above the notes. The piece concludes with a double bar line and repeat dots at the end of the fourth staff.



Voice V  
Galliarde Belul

Musical score for Galliarde Belul, Voice V. The piece is in 3/2 time and G minor. It consists of 35 measures. The notation includes a key signature of one flat, a 3/2 time signature, and various note values including quarter, eighth, and sixteenth notes. Measure numbers 5, 10, 15, 20, 25, 30, and 35 are indicated above the staff. The piece concludes with a double bar line and repeat dots.

Paduana Basse

Musical score for Paduana Basse. The piece is in 4/2 time and G minor. It consists of 35 measures. The notation includes a key signature of one flat, a 4/2 time signature, and various note values including quarter, eighth, and sixteenth notes. Measure numbers 5, 10, 15, 20, 25, 30, and 35 are indicated above the staff. The piece concludes with a double bar line and repeat dots.

Voice V  
Galliarda Costapo

5  
10  
15  
20  
25  
30  
35  
40

Paduana Sire

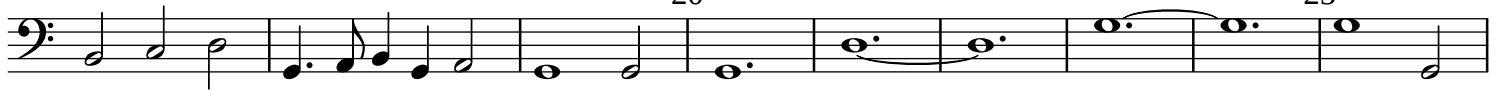
5  
10  
15  
20  
25  
30  
35

Galliarda Sunon

5  
10  
15

20

25

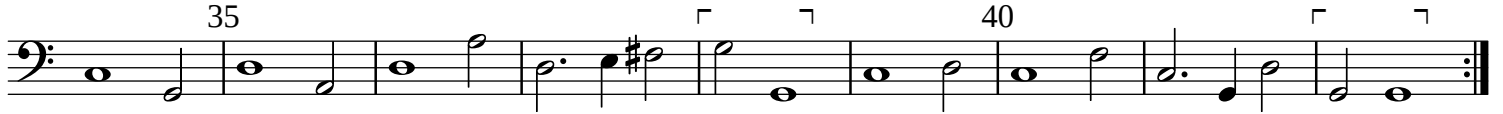


30



35

40



### Paduana Moroscopoh

1

5



10

15



20



25



### Galliarda Cabra

5



10

15

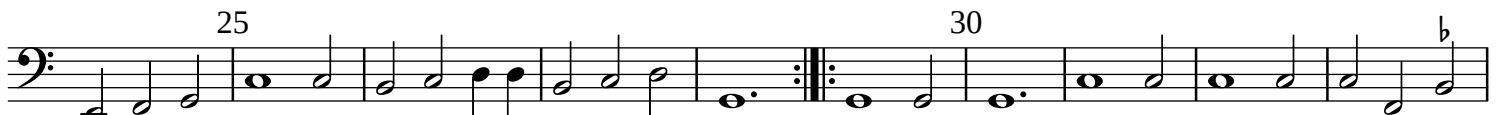


20



25

30



35

40



Voice V  
Courante Laraxa

The musical score for "Courante Laraxa" is written in bass clef with a 6/8 time signature. It consists of ten staves of music. The first staff begins with a treble clef and a key signature of one sharp (F#), which is then changed to bass clef. The piece features several first and second endings, marked with "1." and "2." above the staff. Measure numbers 5, 10, 15, 20, 25, 30, and 35 are indicated above the staves. The score concludes with a double bar line and repeat dots.