

Fantasie II

Claude le Jeune (c.1528-1600)

Dessus (part 1 of 4)

Second livre des meslanges (Ballard press, Paris, 1612)

5

10

15

20

25

30

35

40

45

50

55

4

60

65

3

Fantasie II: (dessus)

2

70

1 75



80



85



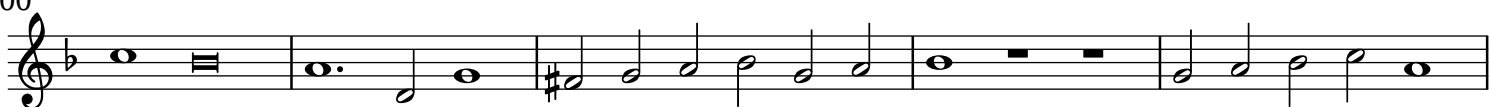
90



95



100



105



110



115



120

125



Fantasie II

Claude le Jeune (c.1528-1600)

Hautecontre (part 2 of 4)

Second livre des meslanges (Ballard press, Paris, 1612)

2 5 10 15 20 25 30 35 40 45 50 55 60 65 70

Fantasie II: (hautecontre)

Musical score for Fantasie II: (hautecontre). The score is written in treble clef with a key signature of one flat (B-flat). It consists of ten staves of music. Measure numbers are indicated at the beginning of several staves: 75, 80, 85, 90, 95, 100, 105, 110, 115, 120, and 125. The notation includes various note values, rests, and dynamic markings. The piece concludes with a double bar line at the end of the tenth staff.

Fantasie II

Claude le Jeune (c.1528-1600)

Hautecontre (part 2 of 4)

Second livre des meslanges (Ballard press, Paris, 1612)

2 5 10 15 20 25 30 35 40 45 50 3 55 3 60 1 65 1 70 75

Musical score for Fantasie II: (hautecontre), page 2. The score is written in bass clef with a key signature of one flat (B-flat). The music is organized into systems of two staves each. Measure numbers 80, 85, 90, 95, 100, 105, 110, 115, 120, and 125 are indicated above the staves. The score concludes with a double bar line at the end of the final system.

Fantasia II

Claude le Jeune (c.1528-1600)

Taille (part 3 of 4)

Second livre des meslanges (Ballard press, Paris, 1612)

4 5 2 10 15 20 25 30 35 40 45 50 55 60 65 70 75

Musical score for Fantasia II: (taille), measures 80-125. The score is written in treble clef with a key signature of one flat (B-flat). The time signature is 3/8. The music consists of a single melodic line. Measure numbers 80, 85, 90, 95, 100, 105, 110, 115, and 120 are indicated at the start of their respective staves. The score includes various rhythmic values such as quarter notes, eighth notes, and dotted notes, as well as rests and dynamic markings like mf and f . The piece concludes with a double bar line at measure 125.

Fantasie II

Claude le Jeune (c.1528-1600)

Taille (part 3 of 4)

Second livre des meslanges (Ballard press, Paris, 1612)

4 5 2 10 15 20 25 30 35 40 45 50 55 60 65 70 75

80



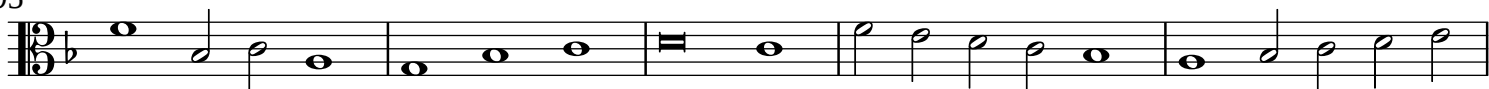
85



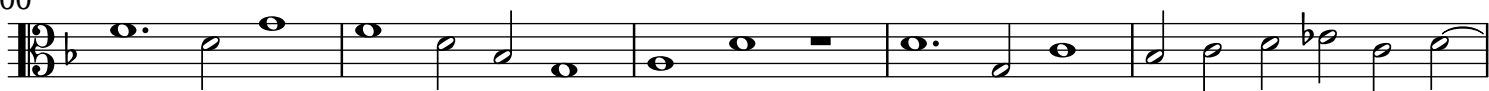
90



95



100



105



110



115



120



Fantasie II

Claude le Jeune (c.1528-1600)

Bassecontre (part 4 of 4)

Second livre des meslanges (Ballard press, Paris, 1612)

4 5 5 10 1

15

20 25

30 4 35

40

1 45 5 50 1

55

60 2 65

70 2

75 1 80 1

85

90 95

Musical score for Fantasia II: (bassecontre) in bass clef with a key signature of one flat. The score is divided into five systems, each containing measures 1 through 125. Measure numbers 1, 2, 100, 105, 110, 115, 120, and 125 are marked at the beginning of their respective measures. The notation includes quarter notes, eighth notes, and rests. The piece concludes with a double bar line at measure 125.