

Fantasie II

Claude le Jeune (c.1528-1600)

Dessus (part 1 of 4)

Second livre des meslanges (Ballard press, Paris, 1612)

5
10
15
20
25
30
35
40
45
50
55
4
60
65
3

Fantasie II: (dessus)

2

A musical score for a soprano part, titled "Fantasie II: (dessus)". The score is written on a single staff in G major (one sharp) and 4/4 time. It consists of 125 measures, divided into 13 systems of five measures each. Measure numbers 70, 75, 80, 85, 90, 95, 100, 105, 110, 115, and 125 are indicated at the beginning of their respective systems. The music features a variety of note values including quarter, eighth, and sixteenth notes, as well as rests and accidentals. A first ending bracket is present above measures 75 and 76. The score concludes with a double bar line at the end of measure 125.

Fantasie II

Claude le Jeune (c.1528-1600)

Hautecontre (part 2 of 4)

Second livre des meslanges (Ballard press, Paris, 1612)

2 5 10 15 20 25 30 35 40 45 50 55 60 65 70

Fantasie II: (hautecontre)

A musical score for the piece 'Fantasie II: (hautecontre)'. The score is written on ten staves of music, each beginning with a treble clef and a key signature of one flat (B-flat). The music is in a common time signature. The score is divided into measures, with measure numbers 75, 80, 85, 90, 95, 100, 105, 110, 115, 120, and 125 marked at the beginning of their respective staves. The notation includes various note values (quarter, eighth, and sixteenth notes), rests, and dynamic markings. The piece concludes with a double bar line at the end of the tenth staff.

Fantasie II

Claude le Jeune (c.1528-1600)

Hautecontre (part 2 of 4)

Second livre des meslanges (Ballard press, Paris, 1612)

2 5 10 15 20 25 30 35 40 45 50 3 55 3 60 1 65 1 70 75

Musical score for Fantasie II: (hautecontre), page 2. The score is written in bass clef with a key signature of one flat (B-flat). The piece is in 3/4 time. The score consists of eight staves of music, with measure numbers 80, 85, 90, 95, 100, 105, 110, 115, 120, and 125 marked above the staves. The music features a variety of note values, including quarter, eighth, and sixteenth notes, as well as rests and accidentals. The piece concludes with a double bar line at the end of the eighth staff.

Fantasie II

Claude le Jeune (c.1528-1600)

Taille (part 3 of 4)

Second livre des meslanges (Ballard press, Paris, 1612)

4 5 2 10 15 20 25 30 35 40 45 50 55 60 65 70 75

80



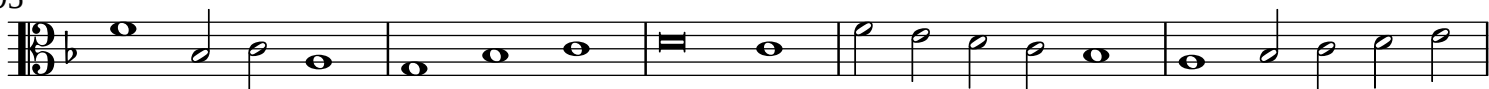
85



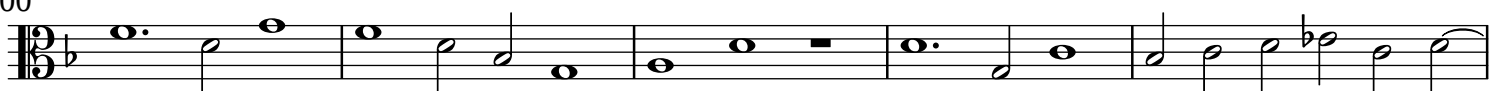
90



95



100



105



110



115



120



Fantasie II

Claude le Jeune (c.1528-1600)

Bassecontre (part 4 of 4)

Second livre des meslanges (Ballard press, Paris, 1612)

4 5 5 10 1

15

20 25

30 4 35

40

1 45 5 50 1

55

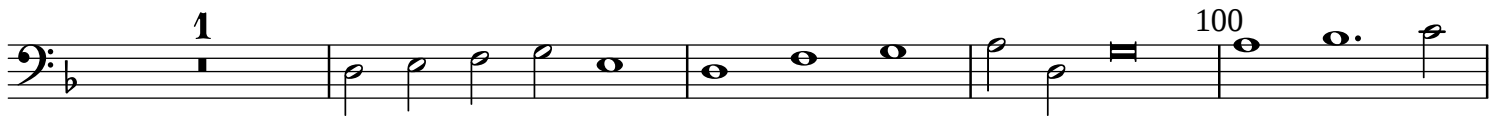
60 2 65

70 2

75 1 80 1

85

90 95



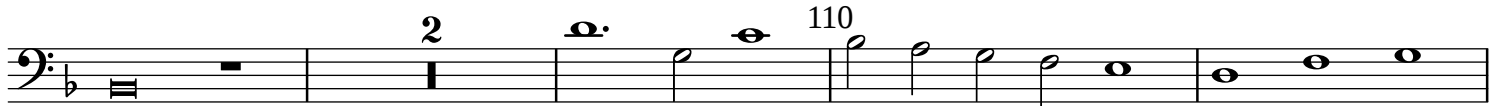
1 100

The first staff of music shows measures 1 through 100. It begins with a bass clef and a key signature of one flat. The melody consists of a series of quarter notes and half notes, with a repeat sign at the end of measure 100.



105

The second staff of music shows measures 105 through 110. The melody continues with quarter and half notes, ending with a repeat sign at the end of measure 110.



2 110

The third staff of music shows measures 110 through 115. It starts with a repeat sign, followed by a measure with a fermata over a note, and then continues with quarter notes. Measure 115 ends with a repeat sign.



115

The fourth staff of music shows measures 115 through 120. It begins with a half note followed by quarter notes. Measures 116-120 feature a series of repeated notes indicated by repeat signs.



120 125

The fifth staff of music shows measures 120 through 125. It starts with repeated notes, followed by quarter notes, and ends with a double bar line at measure 125.