

# Fantasia suite 1 for 2 violins

VdGS no. 1 (Charteris no. C109)

John Coprario (c.1570s-1626)

Violino I (part 1 of 3)

Fr-Pc Res. F. 770; GB-Lbl ADd. MS. 23779

## Fantazia

5

10

15

20

25

30

35

40

45

50

55

60

This section consists of four staves of music in treble clef. The first staff starts at measure 45. The second staff has a measure rest at the beginning, followed by a fermata over a whole note, and then continues. The third staff has a measure rest at the beginning, followed by a fermata over a whole note, and then continues. The fourth staff ends with a double bar line.

Almaine

5

10

15

6/8

20

This section consists of four staves of music in treble clef, 6/8 time signature. The first staff starts at measure 1. The second staff has a measure rest at the beginning, followed by a fermata over a whole note, and then continues. The third staff has a measure rest at the beginning, followed by a fermata over a whole note, and then continues. The fourth staff ends with a double bar line.

Galliard

5

1

10

15

20

This section consists of three staves of music in treble clef, 3/8 time signature. The first staff starts at measure 1. The second staff has a measure rest at the beginning, followed by a fermata over a whole note, and then continues. The third staff has a measure rest at the beginning, followed by a fermata over a whole note, and then continues. The fourth staff ends with a double bar line.

Musical score for Violino I, measures 25-45. The score is written on three staves in treble clef. Measure numbers 25, 30, 35, 40, and 45 are indicated above the staves. The music consists of a series of notes, including quarter, eighth, and sixteenth notes, with some rests and accidentals (sharps).

# Fantasia suite 1 for 2 violins

VdGS no. 1 (Charteris no. C109)

John Coprario (c.1570s-1626)

Violino II (part 2 of 3)

Fr-Pc Res. F. 770; GB-Lbl ADd. MS. 23779

## Fantazia

5

10

15

20

25

1 30

35

40 45

Musical score for Fantasia suite 1 for 2 violins: (violino II), measures 2 to 60. The score is written in treble clef with a key signature of one sharp (F#) and a time signature of 2/4. It consists of four staves of music. Measure numbers 50, 55, and 60 are indicated at the beginning of their respective staves. The piece concludes with a double bar line at measure 60.

Almaine

Musical score for Almaine, measures 1 to 20. The score is written in treble clef with a key signature of one sharp (F#) and a time signature of 2/4. It consists of four staves of music. Measure numbers 5, 10, 15, and 20 are indicated at the beginning of their respective staves. The piece concludes with a double bar line at measure 20.

Galliard

Musical score for Galliard, measures 1 to 15. The score is written in treble clef with a key signature of one flat (Bb) and a time signature of 3/8. It consists of two staves of music. Measure numbers 10 and 15 are indicated at the beginning of their respective staves. The piece concludes with a double bar line at measure 15.

The image shows a musical score for Violino II, consisting of four staves of music. The first staff begins with a first ending bracket labeled '1.' and a second ending bracket labeled '2.'. Measure numbers 20, 25, 30, 35, 40, and 45 are indicated above the staves. The music is written in treble clef with a key signature of one sharp (F#). The notation includes various note values, rests, and dynamic markings. The piece concludes with a double bar line at the end of the fourth staff.

# Fantasia suite 1 for 2 violins

VdGS no. 1 (Charteris no. C109)

John Coprario (c.1570s-1626)

Basso (part 3 of 3)

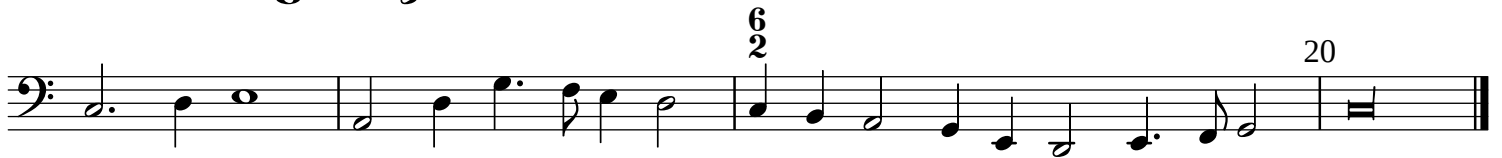
Fr-Pc Res. F. 770; GB-Lbl ADd. MS. 23779

## Fantazia

The image displays a musical score for the Bassoon part of the Fantasia suite 1 for 2 violins, part 3 of 3. The score is written in bass clef with a 4/2 time signature. It consists of ten staves of music. The piece is titled "Fantazia". The score includes various musical notations such as notes, rests, and fingerings. Measure numbers 2, 5, 10, 15, 20, 25, 30, 35, 40, 45, 50, and 55 are indicated above the staves. The key signature is one flat (B-flat). The score ends with a double bar line and a repeat sign.



## Almaine



## Galliard

