

# Fantasia suite 1 for 2 violins

VdGS no. 1 (Charteris no. C109)

John Coprario (c.1570s-1626)

Violino I (part 1 of 3)

Fr-Pc Res. F. 770; GB-Lbl ADd. MS. 23779

## Fantazia

5

10

15

20

25

30

35

40

45

50

55

60

Almaine

5

10

15

20

Galliard

5

10

15

20

Musical score for Violino I, measures 25-45. The score is written on three staves in treble clef. Measure numbers 25, 30, 35, 40, and 45 are indicated above the staves. The music consists of a series of notes, including quarter, eighth, and sixteenth notes, with some rests and accidentals (sharps). The piece concludes with a double bar line at the end of measure 45.

# Fantasia suite 1 for 2 violins

VdGS no. 1 (Charteris no. C109)

John Coprario (c.1570s-1626)

Violino II (part 2 of 3)

Fr-Pc Res. F. 770; GB-Lbl ADd. MS. 23779

## Fantazia

5

10

15

20

25

1 30

35

40 45

Musical score for Fantasia suite 1 for 2 violins: (violino II), measures 2 to 60. The score is written in treble clef with a key signature of one sharp (F#) and a time signature of 2/4. It consists of four staves of music. Measure numbers 50, 55, and 60 are indicated at the beginning of their respective staves. The piece concludes with a double bar line at measure 60.

Almaine

Musical score for Almaine, measures 1 to 20. The score is written in treble clef with a key signature of one sharp (F#) and a time signature of 2/4. It consists of four staves of music. Measure numbers 5, 10, 15, and 20 are indicated at the beginning of their respective staves. The piece concludes with a double bar line at measure 20.

Galliard

Musical score for Galliard, measures 1 to 15. The score is written in treble clef with a key signature of one flat (Bb) and a time signature of 3/8. It consists of two staves of music. Measure numbers 5, 10, and 15 are indicated at the beginning of their respective staves. The piece concludes with a double bar line at measure 15.

The image shows a musical score for Violino II, consisting of four staves of music. The first staff begins with a first ending bracket labeled '1.' and a second ending bracket labeled '2.'. Measure numbers 20, 25, 30, 35, 40, and 45 are placed above the staves to indicate specific points in the piece. The music is written in treble clef with a key signature of one sharp (F#). The notation includes various note values, rests, and accidentals, ending with a double bar line and repeat dots at the final measure.

# Fantasia suite 1 for 2 violins

VdGS no. 1 (Charteris no. C109)

John Coprario (c.1570s-1626)

Basso (part 3 of 3)

Fr-Pc Res. F. 770; GB-Lbl ADd. MS. 23779

Fantazia

2 5 2

10

15

1 20

3 25

30

35

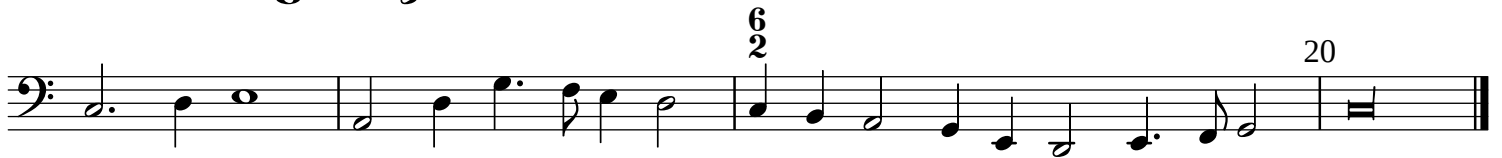
1 40 1 45

1 50 1

55



## Almaine



## Galliard

