

Ricercar Quarto

Adrian Willaert (c.1490-1562)

Cantus (part 1 of 3)

Fantasia Recercari Contrapunti à 3 (1559)

5

10

15

20

25

30

35

45

50

55

60

65

70

75

Musical score for Ricercar Quarto (cantus), measures 80 to 155. The score is written on a single treble clef staff in a key signature of one flat (B-flat). The music consists of a single melodic line with various rhythmic values including quarter, eighth, and sixteenth notes, as well as rests. Measure numbers are indicated at the beginning of each line: 80, 85, 90, 95, 100, 105, 110, 115, 120, 125, 130, 135, 140, 145, and 155. There are several key signature changes indicated by sharp (#) and flat (b) symbols above the staff. A first ending bracket is present above measure 125. The piece concludes with a double bar line at measure 155.

Ricerca Quarto

Adrian Willaert (c.1490-1562)

Cantus (part 1 of 3)

Fantasia Recercari Contrapunti à 3 (1559)

5

10

15

20

25

30

35

5

45

50

55

60

65

70

75

80

1

85

#

90

95

100

b

105

110

#

115

120

1

125

130

135

140

145

#

150

155

#

Ricercar Quarto

Adrian Willaert (c.1490-1562)

Tenor (part 2 of 3)

Fantasia Recercari Contrapunti à 3 (1559)

1 5 10 15 20 25 30 35 40 45 50 55 60 65 70

Ricercar Quarto (tenor)

2
75

80

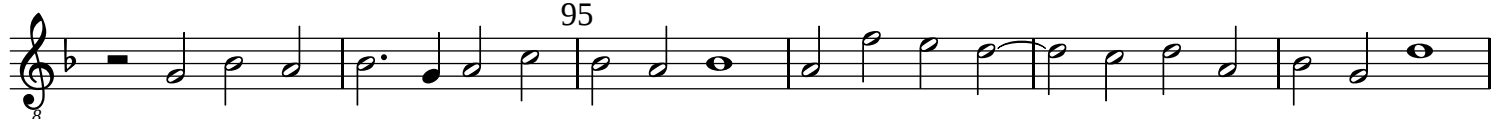


85



90

#



95



100



105



110



115

120

1



125



130



135



140



145

150

Ricercar Quarto

Adrian Willaert (c.1490-1562)

Tenor (part 2 of 3)

Fantasia Recercari Contrapunti à 3 (1559)

1 5 10 15 20 25 30 35 40 45 50 55 60 65 70

A musical score for a tenor voice, titled "Ricercar Quarto (tenor)". The score is written in a single system with 12 staves. The key signature is one flat (B-flat major or D minor), and the time signature is 3/4. The score is divided into measures, with measure numbers 75, 80, 85, 90, 95, 100, 105, 110, 115, 120, 125, 130, 135, 140, and 150 marked at the beginning of their respective staves. The notation includes various rhythmic values such as quarter, eighth, and sixteenth notes, as well as rests and accidentals (sharps, flats, and naturals). The music is a single melodic line for the tenor voice.



Ricerca Quarto

Adrian Willaert (c.1490-1562)

Bassus (part 3 of 3)

Fantasia Recercari Contrapunti à 3 (1559)

4 5 5 10 5 15 5 20 1

25

30 35

40

45

50

55

60 65

70

75

80

85 90

95

100

105

110

115

120

125

130

135

140

145

150

155

The image shows a musical score for the bass part of a Ricercar Quarto. The score is written in bass clef with a key signature of one flat (B-flat). It consists of ten staves of music. Measure numbers 95, 100, 105, 110, 115, 120, 125, 130, 135, 140, 145, 150, and 155 are indicated above the staves. The music features various rhythmic patterns, including eighth and sixteenth notes, and rests. There are several accidentals, including flats and a first fingering '1'. The score ends with a double bar line at measure 155.