

Io t'ho donato il core

Joannes Baptista Zesso (fl. early 16c)

Cantus (part 1 of 4)

Frottole Libro septimo (Petrucci press, Venice, 1507)



Io t'ho do-na-to il co-re, Don - na leg-gia-dra e bel-la, Per ho che tu sei
Per cui or-di-sco e tra-mo O - gni or no-vo pen-sie-ro, Per ho - no - rar' tuo al-
Ché con tuo dol-ce ra - so E si - gno-ril co - stu-mi, Mi scor - zi fuor di
Io vo-glio far-te il men-do, Per - ché già ti fu in-gra-to, In - de-gno e scon-so -
Si che ri-man-te cer - ta O mia spe-ran - za vi - va, Che in - ter - ra sei mia



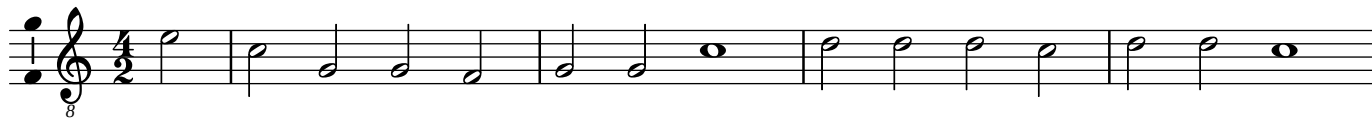
quel - - - la Che tan - to a - mo.
tie - - - ro E chia-ro vi - so.
du - - - mi In fre-sche ro - se.
la - - - to, Co - me mer - to.
di - - - va Et io tuo ser - vo.

Io t'ho donato il core

Joannes Baptista Zesso (fl. early 16c)

Altus (part 2 of 4)

Frottole Libro septimo (Petrucci press, Venice, 1507)



Io t'ho donato il core

Joannes Baptista Zesso (fl. early 16c)

Tenor (part 3 of 4)

Frottole Libro septimo (Petrucci press, Venice, 1507)

The image displays a musical score for a Tenor part, consisting of three staves of music. The first staff begins at measure 8 and ends with a double bar line. The second staff begins at measure 5 and ends at measure 10, with a double bar line. The third staff begins at measure 15 and ends with a double bar line. The music is written in a 2/4 time signature and features a mix of quarter, eighth, and half notes, along with rests. The notation is in a single system with a treble clef and a key signature of one flat (B-flat).

Io t'ho donato il core

Joannes Baptista Zesso (fl. early 16c)

Bassus (part 4 of 4)

Frottole Libro septimo (Petrucci press, Venice, 1507)

Musical score for Bassus (part 4 of 4) in 4/2 time, featuring a single staff with a bass clef and a key signature of one flat. The score consists of two lines of music. The first line contains measures 1 through 5, with a measure rest above measure 5. The second line contains measures 6 through 10, with measure rests above measures 7, 8, and 9. The piece concludes with a double bar line.