

In nomine

Edward Gibbons (1568-c.1650)

Superius (part 1 of 5)

GB-Ob MS. Mus. Sch. d. 212-216 (c.1610, London)

2 5 10 15 20 25 30 35 40 45 50

In nomine

Edward Gibbons (1568-c.1650)

Medius (part 2 of 5)

GB-Ob MS. Mus. Sch. d. 212-216 (c.1610, London)

4 5 10

15 20

25 30

35 40

45 50

In nomine

Edward Gibbons (1568-c.1650)

Contratenor (part 3 of 5)

GB-Ob MS. Mus. Sch. d. 212-216 (c.1610, London)

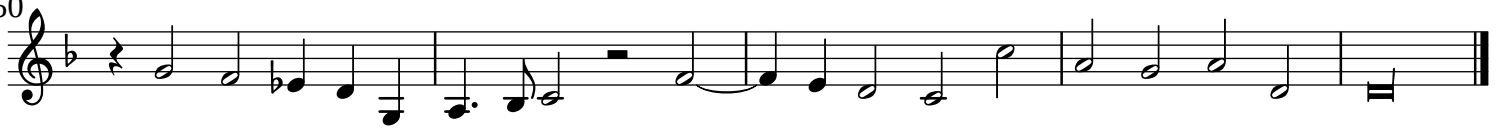
The image displays a musical score for the Contratenor part of the 'In nomine' by Edward Gibbons. The score is written in a single system with ten staves. The key signature is one flat (B-flat), and the time signature is 4/2. The music begins with a treble clef and a common time signature. The score is marked with measure numbers 2, 5, 10, 15, 20, 25, 30, 35, 40, and 45. The notation includes various note values, rests, and accidentals, with some notes beamed together. The piece concludes with a double bar line and repeat dots at the end of the final staff.

2

In nomine: (contratenor)



50



In nomine

Edward Gibbons (1568-c.1650)

Tenor (part 4 of 5)

GB-Ob MS. Mus. Sch. d. 212-216 (c.1610, London)

5

10

15

20

25

30

35

40

45

50

In nomine

Edward Gibbons (1568-c.1650)

Bassus (part 5 of 5)

GB-Ob MS. Mus. Sch. d. 212-216 (c.1610, London)

5

10

15

20

25

30

35

40

45

50