

Paduana Basse

George Engelmann (c.1570-1632)

Cantus I (part 1 of 5)

Paduanas et Galliardas, fasciculus 1 (Schüreri press, Leipzig, 1616)

5

10

15

20

25

30

35

Paduana Basse

George Engelmann (c.1570-1632)

Cantus II (part 2 of 5)

Paduanas et Galliardas, fasciculus 1 (Schüreri press, Leipzig, 1616)

5

10

15

20

25

30

35

Paduana Basse

George Engelmann (c.1570-1632)

Altus (part 3 of 5)

Paduanas et Galliardas, fasciculus 1 (Schüreri press, Leipzig, 1616)

5

10

15

20

25

30

35

Paduana Basse

George Engelmann (c.1570-1632)

Altus (part 3 of 5)

Paduanas et Galliardas, fasciculus 1 (Schüreri press, Leipzig, 1616)

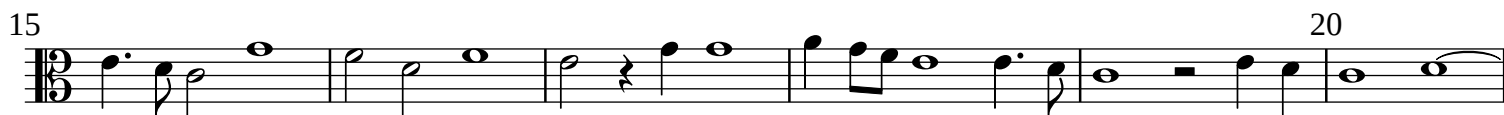
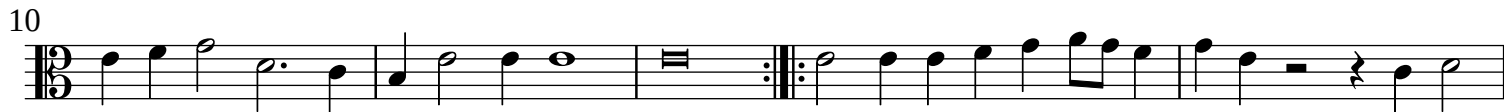
The image displays a musical score for the 'Paduana Basse' in the Altus part, which is the third of five parts. The score is written in 2/4 time and consists of seven staves of music. The first staff begins with a treble clef and a key signature of one sharp (F#). The music features a variety of rhythmic patterns, including eighth and sixteenth notes, and rests. There are several repeat signs (double bar lines with dots) throughout the piece, indicating sections that are repeated. The staves are numbered 5, 10, 15, 20, 25, 30, and 35, corresponding to the measure numbers. The final measure of the piece is marked with a double bar line and a repeat sign.

Paduana Basse

George Engelmann (c.1570-1632)

Altus (part 3 of 5)

Paduanas et Galliardas, fasciculus 1 (Schüreri press, Leipzig, 1616)



Paduana Basse

George Engelmann (c.1570-1632)

Tenor (part 4 of 5)

Paduanas et Galliardas, fasciculus 1 (Schüreri press, Leipzig, 1616)

5

10

15

20

25

30

35

Paduana Basse

George Engelmann (c.1570-1632)

Tenor (part 4 of 5)

Paduanas et Galliardas, fasciculus 1 (Schüreri press, Leipzig, 1616)

5

10

15

20

25

30

35

Paduana Basse

George Engelmann (c.1570-1632)

Bassus (part 5 of 5)

Paduanas et Galliardas, fasciculus 1 (Schüreri press, Leipzig, 1616)

The image displays a musical score for the Bassus part of a Paduana. The score is written in bass clef with a 4/2 time signature. It consists of six staves of music, with measure numbers 5, 10, 15, 20, 25, 30, and 35 indicated above the staves. The music features a variety of rhythmic patterns, including quarter notes, eighth notes, and sixteenth notes, as well as rests and repeat signs. The key signature is one sharp (F#).