

# Fantasia suite 1 for 2 violins

VdGS no. 1 (Charteris no. C109)

John Coprario (c.1570s-1626)

Violino I (part 1 of 3)

Fr-Pc Res. F. 770; GB-Lbl ADd. MS. 23779

## Fantazia

5

10

15

20

25

30

35

40

45

50

55

60

This section consists of four staves of music in treble clef. The first staff starts at measure 45. The second staff has a measure rest at measure 50. The third staff has a measure rest at measure 55. The fourth staff ends at measure 60 with a double bar line.

Almaine

5

10

15

6/8

20

This section consists of six staves of music in treble clef, 4/2 time signature. The first staff starts at measure 1. The second staff has a measure rest at measure 5. The third staff has a measure rest at measure 10. The fourth staff has a measure rest at measure 15. The fifth staff has a 6/8 time signature change at measure 16. The sixth staff ends at measure 20 with a double bar line.

Galliard

5

1

10

15

20

This section consists of three staves of music in treble clef, 3/2 time signature. The first staff starts at measure 1. The second staff has a measure rest at measure 10. The third staff has a first ending bracket at measure 1 and a second ending bracket at measure 20. The piece ends at measure 20 with a double bar line.

Musical score for Violino I, measures 25-45. The score is written on three staves in treble clef. Measure numbers 25, 30, 35, 40, and 45 are indicated above the staves. The music consists of a sequence of notes and rests, ending with a double bar line.

# Fantasia suite 1 for 2 violins

VdGS no. 1 (Charteris no. C109)

John Coprario (c.1570s-1626)

Violino II (part 2 of 3)

Fr-Pc Res. F. 770; GB-Lbl ADd. MS. 23779

## Fantazia

5

10

15

20

25

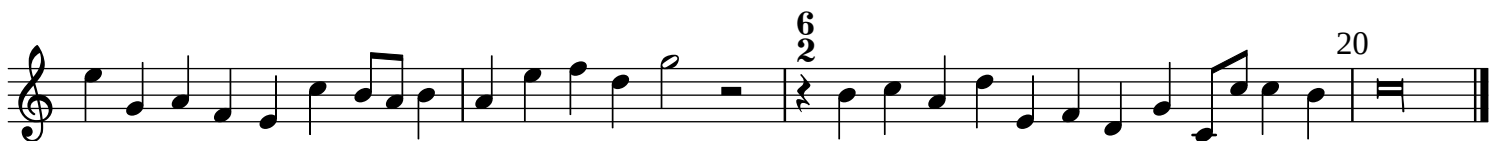
1 30

35

40 45



Almaine



Galliard



1. 2. 20 25 30 35 40 45

# Fantasia suite 1 for 2 violins

VdGS no. 1 (Charteris no. C109)

John Coprario (c.1570s-1626)

Basso (part 3 of 3)

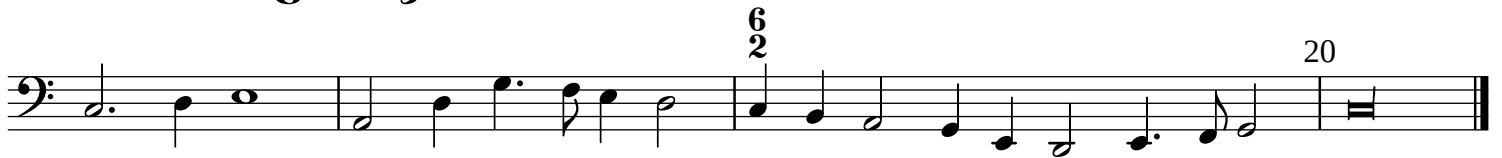
Fr-Pc Res. F. 770; GB-Lbl ADd. MS. 23779

Fantazia

2 5 10 15 20 25 30 35 40 45 50 55



## Almaine



## Galliard

