

Lachrimæ Antiquæ

John Dowland (c.1563-1626)

Cantus (part 1 of 5)

Lachrimæ, or seaven teares (London, c.1604)

5

10

15

20

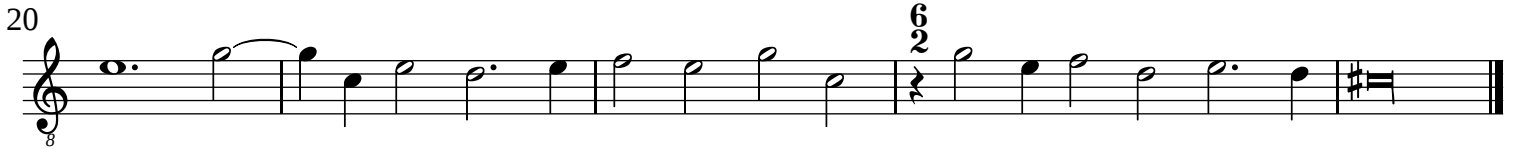
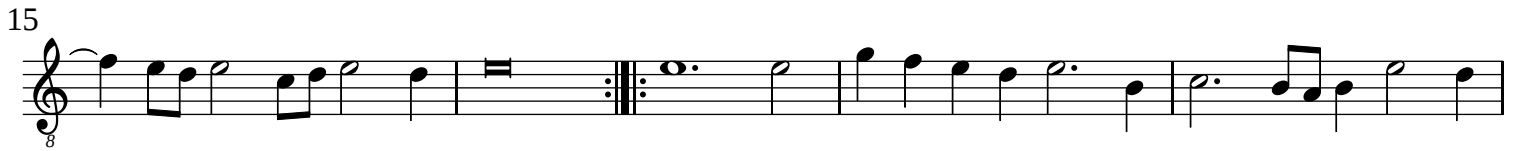
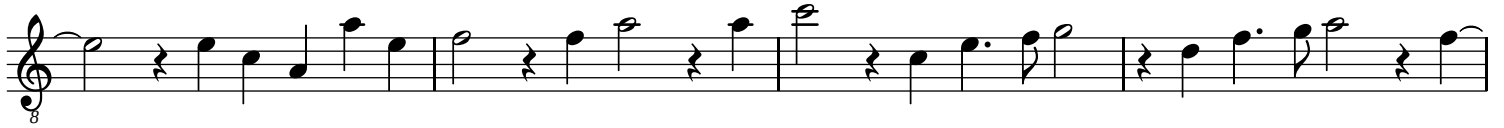
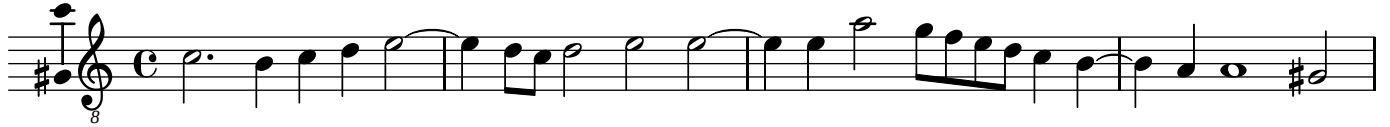
6/2

Lachrimæ Antiquæ

John Dowland (c.1563-1626)

Altus (part 2 of 5)

Lachrimæ, or seaven teares (London, c.1604)



Lachrimæ Antiquæ

John Dowland (c.1563-1626)

Altus (part 2 of 5)

Lachrimæ, or seaven teares (London, c.1604)

5

10

15

20

22

Lachrimæ Antiquæ

John Dowland (c.1563-1626)

Altus (part 2 of 5)

Lachrimæ, or seaven teares (London, c.1604)



10



Lachrimæ Antiquæ

John Dowland (c.1563-1626)

Tenor (part 3 of 5)

Lachrimæ, or seaven teares (London, c.1604)

8

5

10

15

20

6/2

Lachrimæ Antiquæ

John Dowland (c.1563-1626)

Tenor (part 3 of 5)

Lachrimæ, or seaven teares (London, c.1604)

5

10

15

20

6
2

Lachrimæ Antiquæ

John Dowland (c.1563-1626)

Quintus (part 4 of 5)

Lachrimæ, or seaven teares (London, c.1604)

5

10

15

20

6

Lachrimæ Antiquæ

John Dowland (c.1563-1626)

Quintus (part 4 of 5)

Lachrimæ, or seaven teares (London, c.1604)

5

10

15

20

Lachrimæ Antiquæ

John Dowland (c.1563-1626)

Quintus (part 4 of 5)

Lachrimæ, or seaven teares (London, c.1604)

5

10

15

20

6
2

Lachrimæ Antiquæ

John Dowland (c.1563-1626)

Bassus (part 5 of 5)

Lachrimæ, or seaven teares (London, c.1604)

5

10

15

20

$\frac{6}{2}$