

Lachrimæ Antiquæ Novæ

John Dowland (c.1563-1626)

Cantus (part 1 of 5)

Lachrimæ, or seaven teares (London, c.1604)

5

10

6
2

15

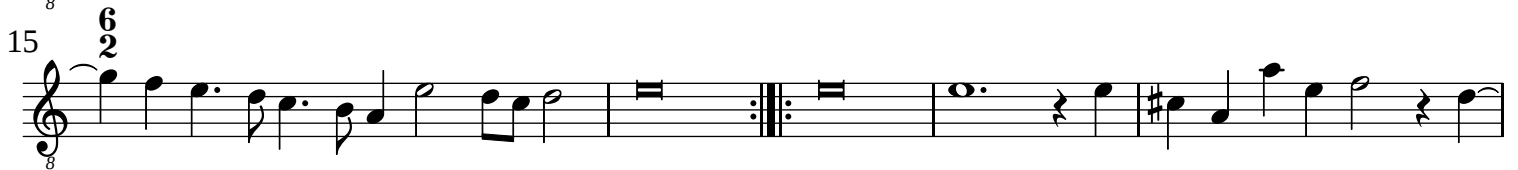
20

Lachrimæ Antiquæ Novæ

John Dowland (c.1563-1626)

Altus (part 2 of 5)

Lachrimæ, or seaven teares (London, c.1604)



Lachrimæ Antiquæ Novæ

John Dowland (c.1563-1626)

Altus (part 2 of 5)

Lachrimæ, or seaven teares (London, c.1604)

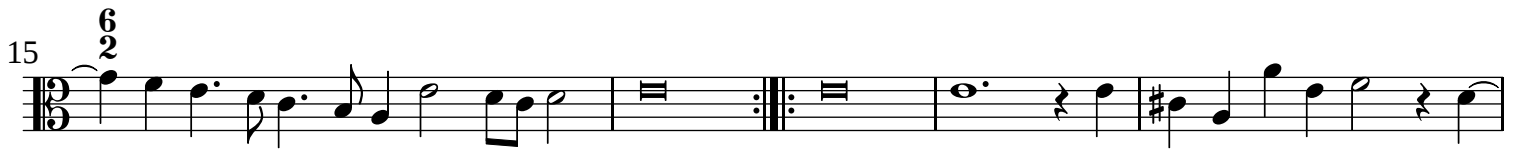
Musical score for Altus (part 2 of 5) of Lachrimæ, or seaven teares by John Dowland. The score is written in treble clef, common time (C), and consists of five staves of music. The first staff begins with a treble clef and a common time signature. The second staff is marked with a measure rest '5'. The third staff is marked with a measure rest '10'. The fourth staff is marked with a measure rest '15' and a '6' above the staff, indicating a change in the number of measures per staff. The fifth staff is marked with a measure rest '20'. The score concludes with a double bar line and a sharp sign on the final staff.

Lachrimæ Antiquæ Novæ

John Dowland (c.1563-1626)

Altus (part 2 of 5)

Lachrimæ, or seaven teares (London, c.1604)



Lachrimæ Antiquæ Novæ

John Dowland (c.1563-1626)

Tenor (part 3 of 5)

Lachrimæ, or seaven teares (London, c.1604)

5

10

15 $\frac{6}{2}$

20

Lachrimæ Antiquæ Novæ

John Dowland (c.1563-1626)

Tenor (part 3 of 5)

Lachrimæ, or seaven teares (London, c.1604)

5

10

15

20

Lachrimæ Antiquæ Novæ

John Dowland (c.1563-1626)

Quintus (part 4 of 5)

Lachrimæ, or seaven teares (London, c.1604)



Lachrimæ Antiquæ Novæ

John Dowland (c.1563-1626)

Quintus (part 4 of 5)

Lachrimæ, or seaven teares (London, c.1604)

5

10

15

20

Lachrimæ Antiquæ Novæ

John Dowland (c.1563-1626)

Quintus (part 4 of 5)

Lachrimæ, or seaven teares (London, c.1604)

5

10

15

20

Lachrimæ Antiquæ Novæ

John Dowland (c.1563-1626)

Bassus (part 5 of 5)

Lachrimæ, or seaven teares (London, c.1604)

5

10

6
2

15

20