

Lachrimæ Antiquæ Novæ

John Dowland (c.1563-1626)

Cantus (part 1 of 5)

Lachrimæ, or seaven teares (London, c.1604)

5

10

6
2

15

20

Lachrimæ Antiquæ Novæ

John Dowland (c.1563-1626)

Altus (part 2 of 5)

Lachrimæ, or seaven teares (London, c.1604)

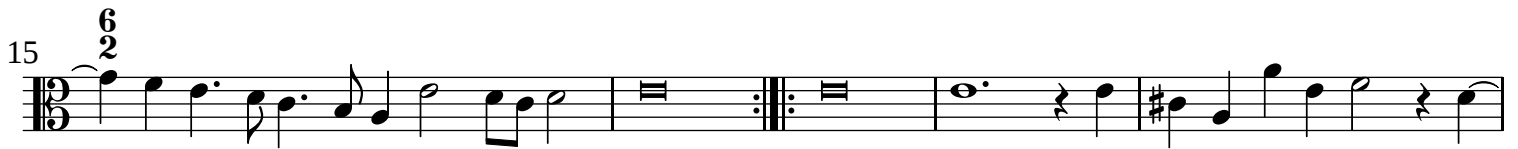
Musical score for Altus (part 2 of 5) of Lachrimæ, or seaven teares by John Dowland. The score is written in treble clef, common time (C), and consists of five staves of music. The key signature is one sharp (F#). The score includes various musical notations such as notes, rests, and bar lines. The first staff starts with a treble clef and a common time signature. The second staff begins with a measure rest and a double bar line with repeat dots. The third staff contains a measure rest and a double bar line with repeat dots. The fourth staff starts with a measure rest and a double bar line with repeat dots. The fifth staff ends with a double bar line and a sharp sign.

Lachrimæ Antiquæ Novæ

John Dowland (c.1563-1626)

Altus (part 2 of 5)

Lachrimæ, or seaven teares (London, c.1604)



Lachrimæ Antiquæ Novæ

John Dowland (c.1563-1626)

Tenor (part 3 of 5)

Lachrimæ, or seaven teares (London, c.1604)

5

10

15

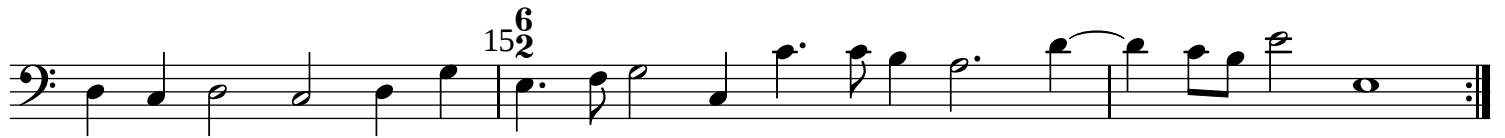
20

Lachrimæ Antiquæ Novæ

John Dowland (c.1563-1626)

Quintus (part 4 of 5)

Lachrimæ, or seaven teares (London, c.1604)



Lachrimæ Antiquæ Novæ

John Dowland (c.1563-1626)

Quintus (part 4 of 5)

Lachrimæ, or seaven teares (London, c.1604)

5

10

15

20

Lachrimæ Antiquæ Novæ

John Dowland (c.1563-1626)

Bassus (part 5 of 5)

Lachrimæ, or seaven teares (London, c.1604)

5

10

6
2

15

20