

Lachrimæ Amantis

John Dowland (c.1563-1626)

Cantus (part 1 of 5)

Lachrimæ, or seaven teares (London, c.1604)

5

10 15

20 25

Lachrimæ Amantis

John Dowland (c.1563-1626)

Altus (part 2 of 5)

Lachrimæ, or seaven teares (London, c.1604)

5

10

15

20

25

Lachrimæ Amantis

John Dowland (c.1563-1626)

Altus (part 2 of 5)

Lachrimæ, or seaven teares (London, c.1604)

5

10

15

6/2

20

25

Lachrimæ Amantis

John Dowland (c.1563-1626)

Altus (part 2 of 5)

Lachrimæ, or seaven teares (London, c.1604)

5

10

15

6

20

25

Lachrimæ Amantis

John Dowland (c.1563-1626)

Tenor (part 3 of 5)

Lachrimæ, or seaven teares (London, c.1604)

8 5

8 10

8 15 6/2 #

20 25

Lachrimæ Amantis

John Dowland (c.1563-1626)

Tenor (part 3 of 5)

Lachrimæ, or seaven teares (London, c.1604)

5

10

15

6/2

#

20

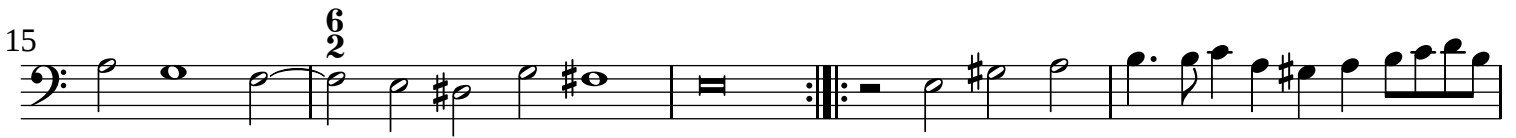
25

Lachrimæ Amantis

John Dowland (c.1563-1626)

Quintus (part 4 of 5)

Lachrimæ, or seaven teares (London, c.1604)



Lachrimæ Amantis

John Dowland (c.1563-1626)

Quintus (part 4 of 5)

Lachrimæ, or seaven teares (London, c.1604)

5

10

15 $\frac{6}{2}$

20 25

Lachrimæ Amantis

John Dowland (c.1563-1626)

Quintus (part 4 of 5)

Lachrimæ, or seaven teares (London, c.1604)

5

10

15

20

25

Lachrimæ Amantis

John Dowland (c.1563-1626)

Bassus (part 5 of 5)

Lachrimæ, or seaven teares (London, c.1604)

5

10

15

6/2

20

25