

# Sir Henry Umptons Funerall

John Dowland (c.1563-1626)

Cantus (part 1 of 5)

Lachrimæ, or seaven teares (London, c.1604)

5

10

15

20

25

# Sir Henry Umptons Funerall

John Dowland (c.1563-1626)

Altus (part 2 of 5)

Lachrimæ, or seaven teares (London, c.1604)

5

10

15

20

25

# Sir Henry Umptons Funerall

John Dowland (c.1563-1626)

Altus (part 2 of 5)

Lachrimæ, or seaven teares (London, c.1604)

The image displays a musical score for the Altus part (part 2 of 5) of the piece 'Sir Henry Umptons Funerall' by John Dowland. The score is written in a single system with five staves. The first staff is in treble clef, and the subsequent four staves are in bass clef. The key signature is one flat (B-flat), and the time signature is 4/2. The music features a variety of note values, including quarter, eighth, and sixteenth notes, as well as rests. Bar numbers 5, 10, 15, 20, and 25 are indicated above the staves. The piece concludes with a double bar line and repeat dots.

# Sir Henry Umptons Funerall

John Dowland (c.1563-1626)

Tenor (part 3 of 5)

Lachrimæ, or seaven teares (London, c.1604)

5

10

15

20

25

# Sir Henry Umptons Funerall

John Dowland (c.1563-1626)

Tenor (part 3 of 5)

Lachrimæ, or seaven teares (London, c.1604)

The image displays a musical score for the Tenor part (part 3 of 5) of the piece "Sir Henry Umptons Funerall" by John Dowland. The score is written in bass clef with a key signature of one flat (B-flat) and a time signature of 4/2. The music is organized into six staves, with measure numbers 5, 10, 15, 20, and 25 indicated above the respective staves. The notation includes various note values (quarter, eighth, and sixteenth notes), rests, and accidentals (sharps and flats). The piece concludes with a double bar line and repeat dots.

# Sir Henry Umptons Funerall

John Dowland (c.1563-1626)

Quintus (part 4 of 5)

Lachrimæ, or seaven teares (London, c.1604)

5

10

15

20

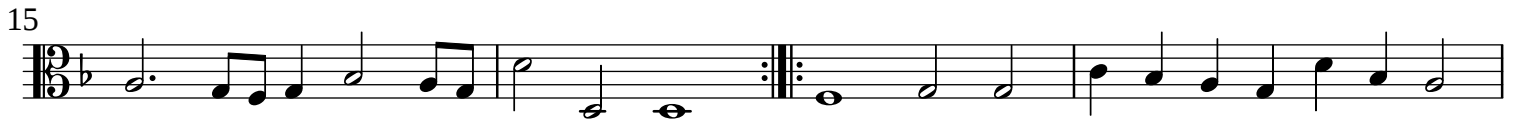
25

# Sir Henry Umptons Funerall

John Dowland (c.1563-1626)

Quintus (part 4 of 5)

Lachrimæ, or seaven teares (London, c.1604)



# Sir Henry Umptons Funerall

John Dowland (c.1563-1626)

Bassus (part 5 of 5)

Lachrimæ, or seaven teares (London, c.1604)

5

10

15

20

25