

# Sir Henry Umptons Funerall

John Dowland (c.1563-1626)

Cantus (part 1 of 5)

Lachrimæ, or seaven teares (London, c.1604)

5

10

15

20

25

# Sir Henry Umptons Funerall

John Dowland (c.1563-1626)

Altus (part 2 of 5)

Lachrimæ, or seaven teares (London, c.1604)

The image displays a musical score for the Altus part (part 2 of 5) of the piece 'Sir Henry Umptons Funerall' by John Dowland. The score is written in a single system with five staves, each containing a line of music. The key signature is one flat (B-flat) and the time signature is 4/4. The music is in a minor mode. The score is divided into measures, with measure numbers 5, 10, 15, 20, and 25 indicated above the staves. The notation includes various note values (quarter, eighth, and sixteenth notes), rests, and bar lines. The piece concludes with a double bar line and repeat dots.

# Sir Henry Umptons Funerall

John Dowland (c.1563-1626)

Altus (part 2 of 5)

Lachrimæ, or seaven teares (London, c.1604)

The image displays a musical score for the Altus part (part 2 of 5) of the piece 'Sir Henry Umptons Funerall' by John Dowland. The score is written in a single system with five staves. The first staff is in treble clef, and the subsequent four staves are in bass clef. The key signature is one flat (B-flat), and the time signature is 4/2. The music is a lute-style piece, characterized by its rhythmic patterns and melodic lines. The score includes measure numbers 5, 10, 15, 20, and 25, indicating the progression of the piece. The notation includes various note values, rests, and articulation marks, such as slurs and accents. The piece concludes with a double bar line and repeat dots.

# Sir Henry Umptons Funerall

John Dowland (c.1563-1626)

Tenor (part 3 of 5)

Lachrimæ, or seaven teares (London, c.1604)

5

10

15

20

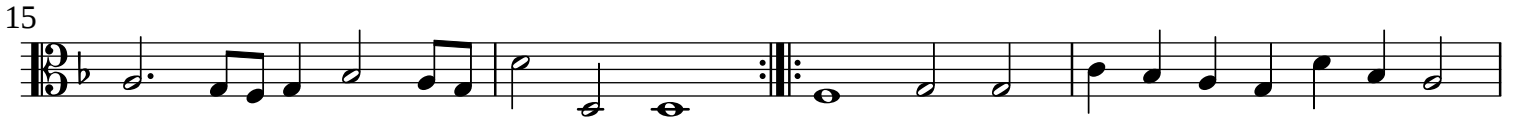
25

# Sir Henry Umptons Funerall

John Dowland (c.1563-1626)

Quintus (part 4 of 5)

Lachrimæ, or seaven teares (London, c.1604)



# Sir Henry Umptons Funerall

John Dowland (c.1563-1626)

Bassus (part 5 of 5)

Lachrimæ, or seaven teares (London, c.1604)

5

10

15

20

25