

13 Correnti - Canto I

Marco Uccellini (c.1603-1680)

La Castigliona *Corrente I*

Marco Uccellini (c.1603-1680)

Musical score for La Castigliona, Corrente I. The score is written in treble clef with a key signature of one sharp (F#) and a 3/2 time signature. It consists of three staves of music. The first staff begins with a treble clef and a key signature of one sharp (F#). The second staff continues the melody with measure numbers 10, 15, and 20. The third staff concludes the piece with measure numbers 25 and 30, featuring first and second endings.

La Donlina *Corrente II*

Marco Uccellini (c.1603-1680)

Musical score for La Donlina, Corrente II. The score is written in treble clef with a key signature of two sharps (F# and C#) and a 3/2 time signature. It consists of two staves of music. The first staff begins with a treble clef and a key signature of two sharps (F# and C#). The second staff continues the melody with measure numbers 10, 15, and 20, ending with first and second endings.

L'Incostante *Corrente III*

Marco Uccellini (c.1603-1680)

Musical score for L'Incostante, Corrente III. The score is written in treble clef with a key signature of two sharps (F# and C#) and a 3/2 time signature. It consists of four staves of music. The first staff begins with a treble clef and a key signature of two sharps (F# and C#). The second, third, and fourth staves continue the melody with measure numbers 10, 20, 30, and 35, ending with first and second endings.

La Cintia

Corrente IV

Marco Uccellini (c.1603-1680)

L'Ardita

Corrente V

Marco Uccellini (c.1603-1680)

La Corsetta

Corrente VI

Marco Uccellini (c.1603-1680)

La Silvia

Corrente VII

Marco Uccellini (c.1603-1680)

Musical score for La Silvia, Corrente VII. The score is written in treble clef with a 3/4 time signature. It consists of four staves of music. The first staff begins with a key signature of one sharp (F#) and a common time signature. The music features a mix of eighth and sixteenth notes, with some rests. Measure numbers 5, 10, 15, and 20 are indicated. The piece concludes with a double bar line and repeat signs.

La Tassona

Corrente VIII

Marco Uccellini (c.1603-1680)

Musical score for La Tassona, Corrente VIII. The score is written in treble clef with a 3/4 time signature. It consists of four staves of music. The first staff begins with a key signature of two sharps (F# and C#) and a common time signature. The music features a mix of eighth and sixteenth notes, with some rests. Measure numbers 5, 10, 15, 20, 25, and 30 are indicated. The piece concludes with a double bar line and repeat signs.

La Simona

Corrente IX

Marco Uccellini (c.1603-1680)

Musical score for La Simona, Corrente IX. The score is written in treble clef with a 3/4 time signature. It consists of three staves of music. The first staff begins with a key signature of one flat (Bb) and a common time signature. The music features a mix of eighth and sixteenth notes, with some rests. Measure numbers 5, 10, 15, 20, and 30 are indicated. The piece concludes with a double bar line and repeat signs.

La Balia

Corrente X

Marco Uccellini (c.1603-1680)

Musical score for *La Balia*, Corrente X, by Marco Uccellini. The score is in treble clef, key of D major, and 3/4 time. It consists of four staves of music. The first staff starts with a repeat sign and a fermata. The second staff has a measure rest of 10. The third staff has first and second endings at measures 1-2 and 25-26. The fourth staff has a measure rest of 30 and first and second endings at measures 35-36.

La Gardina

Corrente XI

Marco Uccellini (c.1603-1680)

Musical score for *La Gardina*, Corrente XI, by Marco Uccellini. The score is in treble clef, key of B minor, and 3/4 time. It consists of four staves of music. The first staff starts with a repeat sign and a fermata. The second staff has a measure rest of 10. The third staff has first and second endings at measures 1-2 and 25-26. The fourth staff has a measure rest of 30 and first and second endings at measures 35-36.

La Briganta

Corrente XII

Marco Uccellini (c.1603-1680)

Musical score for *La Briganta*, Corrente XII, by Marco Uccellini. The score is in treble clef, key of B minor, and 3/4 time. It consists of four staves of music. The first staff starts with a repeat sign and a fermata. The second staff has a measure rest of 10. The third staff has a measure rest of 20. The fourth staff has first and second endings at measures 25-26 and 30-31.

La Banda

Corrente XIII

Marco Uccellini (c.1603-1680)

5

10

15

1. 2.

20

25

30

31

1. 2.

13 Correnti - Canto II

Marco Uccellini (c.1603-1680)

La Castigliona

Corrente I

Marco Uccellini (c.1603-1680)

La Donlina

Corrente II

Marco Uccellini (c.1603-1680)

L'Incostante

Corrente III

Marco Uccellini (c.1603-1680)

La Cintia

Corrente IV

Marco Uccellini (c.1603-1680)

Musical score for La Cintia, Corrente IV. The score is written in treble clef with a key signature of two sharps (F# and C#) and a 3/4 time signature. It consists of four staves of music. The first staff begins with a repeat sign and a fermata over the first measure. Measure numbers 5, 10, 15, 20, 25, and 30 are indicated above the staves. The piece concludes with a double bar line and repeat signs.

L'Ardita

Corrente V

Marco Uccellini (c.1603-1680)

Musical score for L'Ardita, Corrente V. The score is written in treble clef with a key signature of two sharps (F# and C#) and a 3/4 time signature. It consists of three staves of music. The first staff begins with a repeat sign and a fermata over the first measure. Measure numbers 5, 10, 15, 20, 25, and 30 are indicated above the staves. The piece concludes with a double bar line and repeat signs.

La Corsetta

Corrente VI

Marco Uccellini (c.1603-1680)

Musical score for La Corsetta, Corrente VI. The score is written in treble clef with a key signature of two sharps (F# and C#) and a 3/4 time signature. It consists of four staves of music. The first staff begins with a repeat sign and a fermata over the first measure. Measure numbers 5, 10, 15, 20, 25, and 30 are indicated above the staves. The piece concludes with a double bar line and repeat signs.

La Silvia

Corrente VII

Marco Uccellini (c.1603-1680)

La Tassona

Corrente VIII

Marco Uccellini (c.1603-1680)

La Simona

Corrente IX

Marco Uccellini (c.1603-1680)

La Balia

Corrente X

Marco Uccellini (c.1603-1680)

Musical score for La Balia, Corrente X. The score is written in treble clef with a key signature of two sharps (F# and C#) and a 3/4 time signature. It consists of four staves of music. The first staff begins with a repeat sign and a fermata. Measure numbers 5, 10, 15, 20, 25, 30, and 35 are indicated above the notes. The piece concludes with a double bar line and repeat signs.

La Gardina

Corrente XI

Marco Uccellini (c.1603-1680)

Musical score for La Gardina, Corrente XI. The score is written in treble clef with a key signature of one flat (Bb) and a 3/4 time signature. It consists of four staves of music. The first staff begins with a repeat sign and a fermata. Measure numbers 5, 10, 15, 20, 25, 30, and 35 are indicated above the notes. The piece concludes with a double bar line and repeat signs.

La Briganta

Corrente XII

Marco Uccellini (c.1603-1680)

Musical score for La Briganta, Corrente XII. The score is written in treble clef with a key signature of one flat (Bb) and a 3/4 time signature. It consists of four staves of music. The first staff begins with a repeat sign and a fermata. Measure numbers 5, 10, 15, 20, 25, and 30 are indicated above the notes. The piece concludes with a double bar line and repeat signs.

La Banda

Corrente XIII

Marco Uccellini (c.1603-1680)

5

10

15

1

2

20

25

30

1

2

13 Correnti - Basso

Marco Uccellini (c.1603-1680)

La Castigliona

Corrente I

Marco Uccellini (c.1603-1680)

Musical score for *La Castigliona*, *Corrente I*. The score is written in bass clef with a 3/2 time signature. It consists of three staves of music. The first staff begins with a treble clef and a 3/2 time signature, followed by a double bar line and a repeat sign. The second staff continues the melody with measure numbers 10, 15, and 20. The third staff continues with measure numbers 25 and 30, ending with a double bar line and repeat sign. Fingerings are indicated by numbers 1-5 above notes. A first and second ending are shown at the end of the piece.

La Donlina

Corrente II

Marco Uccellini (c.1603-1680)

Musical score for *La Donlina*, *Corrente II*. The score is written in bass clef with a 3/2 time signature. It consists of two staves of music. The first staff begins with a treble clef and a 3/2 time signature, followed by a double bar line and a repeat sign. The second staff continues the melody with measure numbers 10, 15, and 20, ending with a double bar line and repeat sign. Fingerings are indicated by numbers 1-5 above notes. A first and second ending are shown at the end of the piece.

L'Incostante

Corrente III

Marco Uccellini (c.1603-1680)

Musical score for *L'Incostante*, *Corrente III*. The score is written in bass clef with a 3/2 time signature. It consists of three staves of music. The first staff begins with a treble clef and a 3/2 time signature, followed by a double bar line and a repeat sign. The second staff continues the melody with measure numbers 10, 15, and 20. The third staff continues with measure numbers 25, 30, and 35, ending with a double bar line and repeat sign. Fingerings are indicated by numbers 1-5 above notes. A first and second ending are shown at the end of the piece.

La Cintia

Corrente IV

Marco Uccellini (c.1603-1680)

5

10

15

20

25

30

L'Ardita

Corrente V

Marco Uccellini (c.1603-1680)

5

10

15

20

25

30

La Corsetta

Corrente VI

Marco Uccellini (c.1603-1680)

5

10

15

20

25

30

La Silvia

Corrente VII

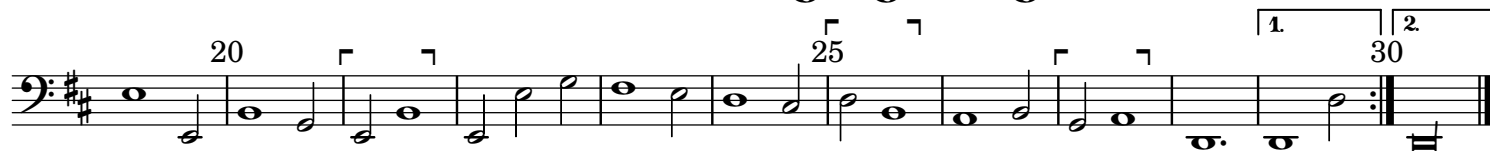
Marco Uccellini (c.1603-1680)



La Tassona

Corrente VIII

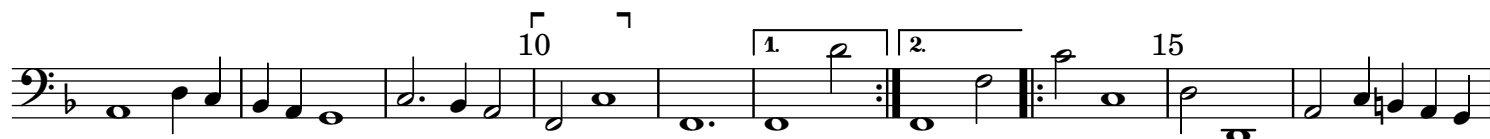
Marco Uccellini (c.1603-1680)



La Simona

Corrente IX

Marco Uccellini (c.1603-1680)



La Balia

Corrente X

Marco Uccellini (c.1603-1680)

Musical score for 'La Balia' (Corrente X) in bass clef, 3/2 time signature, and D major key. The score consists of four staves of music. Measure numbers 5, 10, 15, 20, 25, 30, and 35 are indicated above the notes. The piece concludes with a double bar line and repeat signs.

La Gardina

Corrente XI

Marco Uccellini (c.1603-1680)

Musical score for 'La Gardina' (Corrente XI) in bass clef, 3/2 time signature, and B minor key. The score consists of four staves of music. Measure numbers 10, 15, 20, 25, and 30 are indicated above the notes. Fingerings (e.g., 4 #, 6, 7, 6, 5, 4, 3, 6, 5, 4 #, 4, 3, 5, 6, b, b, 4, 3) and breath marks (b) are present throughout the score. The piece concludes with a double bar line and repeat signs.

La Briganta

Corrente XII

Marco Uccellini (c.1603-1680)

Musical score for La Briganta, Corrente XII, Bass clef, 3/2 time signature. The score consists of four staves of music. The first staff begins with a treble clef and a key signature of one flat (B-flat). The music is in 3/2 time. The score includes various musical notations such as notes, rests, and bar lines. Measure numbers 5, 10, 15, 20, 25, and 30 are indicated above the staves. There are first and second endings marked with '1.' and '2.' at measures 10-11 and 29-30. A fermata is present over measure 20. A 'b' symbol is placed below the staff at measure 7.

La Banda

Corrente XIII

Marco Uccellini (c.1603-1680)

Musical score for La Banda, Corrente XIII, Bass clef, 3/2 time signature. The score consists of four staves of music. The first staff begins with a treble clef and a key signature of one flat (B-flat). The music is in 3/2 time. The score includes various musical notations such as notes, rests, and bar lines. Measure numbers 5, 10, 15, 20, 25, and 30 are indicated above the staves. There are first and second endings marked with '1.' and '2.' at measures 10-11 and 29-30. A fermata is present over measure 20.