

## 13 Correnti - Canto I

Marco Uccellini (c.1603-1680)

## La Castigliona

*Corrente I*

Marco Uccellini (c.1603-1680)

Musical score for *La Castigliona*, *Corrente I*. The score is written in treble clef with a 3/2 time signature. It consists of three staves of music. The first staff starts with a treble clef and a 3/2 time signature. The second staff has a treble clef. The third staff has a treble clef and a key signature of one sharp (F#). Measure numbers 5, 10, 15, 20, and 25 are indicated above the staves. The piece ends with a double bar line and repeat signs.

## La Donlina

*Corrente II*

Marco Uccellini (c.1603-1680)

Musical score for *La Donlina*, *Corrente II*. The score is written in treble clef with a 3/2 time signature. It consists of two staves of music. The first staff starts with a treble clef and a 3/2 time signature. The second staff has a treble clef. Measure numbers 5, 10, 15, and 20 are indicated above the staves. The piece ends with a double bar line and repeat signs.

## L'Incostante

*Corrente III*

Marco Uccellini (c.1603-1680)

Musical score for *L'Incostante*, *Corrente III*. The score is written in treble clef with a 3/2 time signature. It consists of four staves of music. The first staff starts with a treble clef and a 3/2 time signature. The second staff has a treble clef. The third staff has a treble clef and a key signature of one sharp (F#). The fourth staff has a treble clef. Measure numbers 5, 10, 15, 20, 25, 30, and 35 are indicated above the staves. The piece ends with a double bar line and repeat signs.

## La Cintia

## Corrente IV

Marco Uccellini (c.1603-1680)

## L'Ardita

## Corrente V

Marco Uccellini (c.1603-1680)

## La Corsetta

## Corrente VI

Marco Uccellini (c.1603-1680)

## La Silvia

## Corrente VII

Marco Uccellini (c.1603-1680)

Musical score for La Silvia, Corrente VII. The score is written in treble clef with a 3/2 time signature. It consists of four staves of music. The first staff starts with a treble clef and a 3/2 time signature. The second staff has a measure rest for the first 10 measures. The third staff has a measure rest for the first 20 measures. The fourth staff has a measure rest for the first 25 measures. The piece ends with a double bar line and repeat signs.

## La Tassona

## Corrente VIII

Marco Uccellini (c.1603-1680)

Musical score for La Tassona, Corrente VIII. The score is written in treble clef with a 3/2 time signature. It consists of four staves of music. The first staff starts with a treble clef and a 3/2 time signature. The second staff has a measure rest for the first 10 measures. The third staff has a measure rest for the first 15 measures. The fourth staff has a measure rest for the first 25 measures. The piece ends with a double bar line and repeat signs.

## La Simona

## Corrente IX

Marco Uccellini (c.1603-1680)

Musical score for La Simona, Corrente IX. The score is written in treble clef with a 3/2 time signature. It consists of three staves of music. The first staff starts with a treble clef and a 3/2 time signature. The second staff has a measure rest for the first 10 measures. The third staff has a measure rest for the first 20 measures. The piece ends with a double bar line and repeat signs.

## La Balia

Corrente X

Marco Uccellini (c.1603-1680)

Musical score for 'La Balia' (Corrente X) by Marco Uccellini. The score is in treble clef, 3/4 time, and D major. It consists of four staves of music. The first staff starts with a repeat sign and a fermata. The second staff has a measure rest of 10. The third staff has first and second endings at measures 1-2 and 25-26. The fourth staff has a measure rest of 30 and first and second endings at measures 35-36.

## La Gardina

Corrente XI

Marco Uccellini (c.1603-1680)

Musical score for 'La Gardina' (Corrente XI) by Marco Uccellini. The score is in treble clef, 3/4 time, and B minor. It consists of four staves of music. The first staff starts with a repeat sign and a fermata. The second staff has a measure rest of 10 and a first ending at measures 15-16. The third staff has a second ending at measures 20-21 and a first ending at measures 25-26. The fourth staff has a measure rest of 30 and first and second endings at measures 35-36.

## La Briganta

Corrente XII

Marco Uccellini (c.1603-1680)

Musical score for 'La Briganta' (Corrente XII) by Marco Uccellini. The score is in treble clef, 3/4 time, and B minor. It consists of four staves of music. The first staff starts with a repeat sign and a fermata. The second staff has a measure rest of 10 and first and second endings at measures 15-16. The third staff has a measure rest of 20 and first and second endings at measures 25-26. The fourth staff has a measure rest of 25 and first and second endings at measures 30-31.

# La Banda

## Corrente XIII

Marco Uccellini (c.1603-1680)

5

10

15

20

25

30

1.

2.

## 13 Correnti - Canto II

Marco Uccellini (c.1603-1680)

## La Castigliona

*Corrente I*

Marco Uccellini (c.1603-1680)

Musical score for *La Castigliona*, *Corrente I*. The score is in 3/2 time and consists of three staves. The first staff starts with a treble clef and a key signature of one sharp (F#). The music features a mix of eighth and sixteenth notes, with some rests. Measure numbers 5, 10, 15, 20, and 25 are indicated above the staves. The piece concludes with a double bar line and repeat signs.

## La Donlina

*Corrente II*

Marco Uccellini (c.1603-1680)

Musical score for *La Donlina*, *Corrente II*. The score is in 3/2 time and consists of two staves. The first staff starts with a treble clef and a key signature of one sharp (F#). The music features a mix of eighth and sixteenth notes, with some rests. Measure numbers 5, 10, 15, and 20 are indicated above the staves. The piece concludes with a double bar line and repeat signs.

## L'Incostante

*Corrente III*

Marco Uccellini (c.1603-1680)

Musical score for *L'Incostante*, *Corrente III*. The score is in 3/2 time and consists of three staves. The first staff starts with a treble clef and a key signature of one flat (Bb). The music features a mix of eighth and sixteenth notes, with some rests. Measure numbers 5, 10, 15, 20, 25, 30, and 35 are indicated above the staves. The piece concludes with a double bar line and repeat signs.

## La Cintia

Corrente IV

Marco Uccellini (c.1603-1680)

5

10

15

20

25

30

## L'Ardita

Corrente V

Marco Uccellini (c.1603-1680)

5

10

15

20

25

30

## La Corsetta

Corrente VI

Marco Uccellini (c.1603-1680)

5

10

15

20

25

30

# La Silvia

Corrente VII

Marco Uccellini (c.1603-1680)

Musical score for 'La Silvia' (Corrente VII) by Marco Uccellini. The score is written in treble clef with a 3/2 time signature. It consists of four staves of music. The first staff begins with a repeat sign and a fermata over the first measure, followed by a sequence of notes. A measure number '5' is placed above the fifth measure. The second staff continues the melody, with measure numbers '10' and '15' above the tenth and fifteenth measures respectively. The third staff features two first and second endings, with measure numbers '20' and '25' above the twentieth and twenty-fifth measures. The fourth staff concludes the piece with two first and second endings, with measure numbers '30' and '35' above the thirtieth and thirty-fifth measures.

# La Tassona

Corrente VIII

Marco Uccellini (c.1603-1680)

Musical score for 'La Tassona' (Corrente VIII) by Marco Uccellini. The score is written in treble clef with a 3/2 time signature and a key signature of two sharps (F# and C#). It consists of three staves of music. The first staff begins with a repeat sign and a fermata over the first measure, followed by a sequence of notes. A measure number '5' is placed above the fifth measure. The second staff continues the melody, with measure numbers '10' and '15' above the tenth and fifteenth measures respectively. The third staff features two first and second endings, with measure numbers '20' and '25' above the twentieth and twenty-fifth measures.

# La Simona

Corrente IX

Marco Uccellini (c.1603-1680)

Musical score for 'La Simona' (Corrente IX) by Marco Uccellini. The score is written in treble clef with a 3/2 time signature and a key signature of one flat (F). It consists of three staves of music. The first staff begins with a repeat sign and a fermata over the first measure, followed by a sequence of notes. A measure number '5' is placed above the fifth measure. The second staff continues the melody, with measure numbers '10' and '15' above the tenth and fifteenth measures respectively. The third staff features two first and second endings, with measure numbers '20' and '25' above the twentieth and twenty-fifth measures.



# La Balia

Corrente X

Marco Uccellini (c.1603-1680)

Musical score for *La Balia*, Corrente X, by Marco Uccellini. The score is in treble clef, 3/4 time, and D major. It consists of four staves of music. The first staff starts with a treble clef, a key signature of two sharps (D major), and a 3/4 time signature. The music begins with a repeat sign. The second staff has a measure rest of 10. The third staff has measure rests of 2 and 20. The fourth staff has measure rests of 30 and 35. The piece ends with a double bar line and repeat signs.

# La Gardina

Corrente XI

Marco Uccellini (c.1603-1680)

Musical score for *La Gardina*, Corrente XI, by Marco Uccellini. The score is in treble clef, 3/4 time, and B minor. It consists of four staves of music. The first staff starts with a treble clef, a key signature of two flats (B minor), and a 3/4 time signature. The music begins with a repeat sign. The second staff has a measure rest of 10. The third staff has measure rests of 2 and 20. The fourth staff has measure rests of 30 and 35. The piece ends with a double bar line and repeat signs.

# La Briganta

Corrente XII

Marco Uccellini (c.1603-1680)

Musical score for *La Briganta*, Corrente XII, by Marco Uccellini. The score is in treble clef, 3/4 time, and B minor. It consists of four staves of music. The first staff starts with a treble clef, a key signature of two flats (B minor), and a 3/4 time signature. The music begins with a repeat sign. The second staff has a measure rest of 10. The third staff has a measure rest of 20. The fourth staff has measure rests of 25 and 30. The piece ends with a double bar line and repeat signs.

# La Banda

## Corrente XIII

Marco Uccellini (c.1603-1680)

5

10

15

1

2

20

25

30

1

2

# 13 Correnti - Basso

Marco Uccellini (c.1603-1680)

## La Castigliona

*Corrente I*

Marco Uccellini (c.1603-1680)

Musical score for *La Castigliona*, *Corrente I*. Bass clef, 3/2 time signature. The score consists of three staves. The first staff starts with a treble clef and a 5-measure phrase. The second staff begins with a bass clef and contains measures 10-15, including first and second endings. The third staff contains measures 20-25, also with first and second endings.

## La Donlina

*Corrente II*

Marco Uccellini (c.1603-1680)

Musical score for *La Donlina*, *Corrente II*. Bass clef, 3/2 time signature. The score consists of two staves. The first staff starts with a treble clef and a 5-measure phrase. The second staff begins with a bass clef and contains measures 10-15, including first and second endings.

## L'Incostante

*Corrente III*

Marco Uccellini (c.1603-1680)

Musical score for *L'Incostante*, *Corrente III*. Bass clef, 3/2 time signature. The score consists of three staves. The first staff starts with a treble clef and a 5-measure phrase. The second staff begins with a bass clef and contains measures 10-15. The third staff contains measures 20-35, including first and second endings.

# La Cintia

Corrente IV

Marco Uccellini (c.1603-1680)

Musical score for La Cintia, Corrente IV. The score is written in bass clef with a key signature of two sharps (F# and C#) and a 3/2 time signature. It consists of four staves of music. The first staff begins with a repeat sign and a fermata over the first measure. Measure numbers 5, 10, 15, 20, 25, and 30 are indicated above the staves. First and second endings are marked with '1' and '2' above the notes.

# L'Ardita

Corrente V

Marco Uccellini (c.1603-1680)

Musical score for L'Ardita, Corrente V. The score is written in bass clef with a key signature of two sharps (F# and C#) and a 3/2 time signature. It consists of four staves of music. The first staff begins with a repeat sign and a fermata over the first measure. Measure numbers 5, 10, 15, 20, 25, and 30 are indicated above the staves. First and second endings are marked with '1' and '2' above the notes.

# La Corsetta

Corrente VI

Marco Uccellini (c.1603-1680)

Musical score for La Corsetta, Corrente VI. The score is written in bass clef with a key signature of two sharps (F# and C#) and a 3/2 time signature. It consists of three staves of music. The first staff begins with a repeat sign and a fermata over the first measure. Measure numbers 5, 10, 15, 20, 25, and 30 are indicated above the staves. First and second endings are marked with '1' and '2' above the notes.

## La Silvia

## Corrente VII

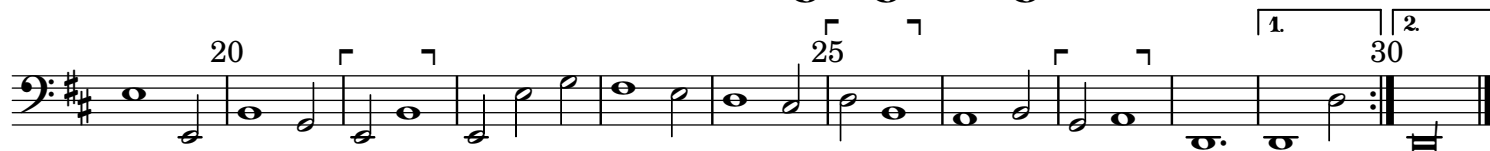
Marco Uccellini (c.1603-1680)



## La Tassona

## Corrente VIII

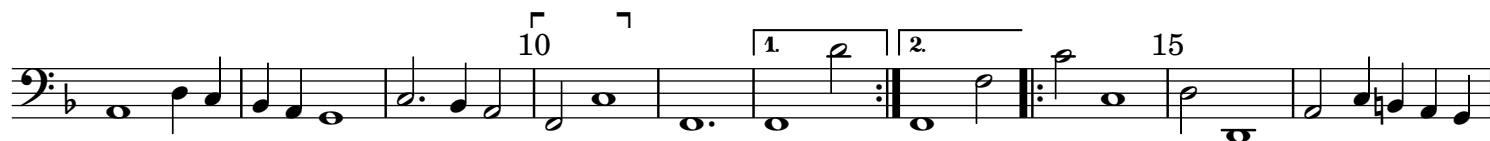
Marco Uccellini (c.1603-1680)



## La Simona

## Corrente IX

Marco Uccellini (c.1603-1680)



# La Balia

Corrente X

Marco Uccellini (c.1603-1680)

Musical score for 'La Balia' (Corrente X) in bass clef, 3/2 time signature, and D major key. The score consists of four staves of music. Measure numbers 5, 10, 15, 20, 25, 30, and 35 are indicated above the notes. The piece concludes with a double bar line and repeat signs.

# La Gardina

Corrente XI

Marco Uccellini (c.1603-1680)

Musical score for 'La Gardina' (Corrente XI) in bass clef, 3/2 time signature, and B minor key. The score consists of four staves of music. Measure numbers 10, 15, 20, 25, and 30 are indicated above the notes. Fingerings (1-5) and breath marks (r) are present throughout. The piece concludes with a double bar line and repeat signs.

# La Briganta

## Corrente XII

Marco Uccellini (c.1603-1680)

Musical score for 'La Briganta' (Corrente XII) in bass clef, 3/2 time signature, and one flat. The score consists of four staves. The first staff begins with a treble clef and a key signature change to one flat. Measure numbers 5, 10, 15, 20, 25, and 30 are indicated. The piece concludes with a double bar line and repeat signs.

# La Banda

## Corrente XIII

Marco Uccellini (c.1603-1680)

Musical score for 'La Banda' (Corrente XIII) in bass clef, 3/2 time signature, and one flat. The score consists of four staves. The first staff begins with a treble clef and a key signature change to one flat. Measure numbers 5, 10, 15, 20, 25, and 30 are indicated. The piece concludes with a double bar line and repeat signs.