



75 #

1 80

- cel - sis. \_\_\_\_\_ Be - ne - di - ctus, be -

85

ne - di - ctus qui ve - nit

90

in no - mi - ne \_\_\_\_\_ Do - mi - ni, in no - mi - ne Do - mi -

95 #

- ni, in no - mi - ne, in no - mi - ne \_\_\_\_\_ Do - mi -

100 #

ni, in no - mi - ne, in no - mi - ne \_\_\_\_\_ Do - mi - ni.

The image shows a musical score for a cantus part. It consists of five staves of music in G major (one sharp). The lyrics are: "cel - sis. Be - ne - di - ctus, be - ne - di - ctus qui ve - nit in no - mi - ne Do - mi - ni, in no - mi - ne Do - mi - ni, in no - mi - ne, in no - mi - ne Do - mi - ni." The score includes measure numbers 75, 80, 85, 90, 95, and 100. There are bar lines and repeat signs. The key signature is G major, indicated by a sharp sign on the F line.

# Missa Puisque j'ai perdu

## Sanctus - Benedictus

Orlande de Lassus (c.1532-1594)

Altus (part 2 of 4)

Misse decem variis concentibus (Gardano press, Venice, 1588)

San - ctus, 5  
san - ctus, 10  
san - ctus, Do - mi - nus De -  
15  
- us Sa - ba - oth, Do - mi - nus De - us Sa -  
20  
- ba - oth, Do - mi - nus De - us Sa - ba - oth. Ple - ni sunt cae - li  
30  
et ter - ra glo - ri - a tua, glo - ri - a  
35  
tu - a. O - san - na in ex - cel - sis, o - san - na in  
40  
ex - cel - sis, o - san - na in ex - cel - sis, o -  
45  
- san - na in ex - cel - sis, o - san - na in ex -  
50  
cel - sis, o - san - na in ex - cel - sis, o - san -  
55  
na in ex - cel - sis, o - san - na in ex - cel - sis, o - san -  
60  
na in ex - cel - sis, o - san - na in ex - cel - sis, o - san -

65

sis, o - san - na in ex - cel - sis, o - san - na in ex -

70

cel - sis, o - san - na in ex - cel - sis, o - san - na in ex - cel -

75

- - - sis, o - san - na in ex - cel - sis. Be - ne - di -

80

85

- - - ctus, qui ve -

90

- nit in no - mi - ne, in no - mi - ne Do - mi - ni, in

95

no - mi - ne Do - mi - ni, in no - mi - ne, in no - mi - ne

100

Do - mi - ni, in no - mi - ne, in no - mi - ne Do - mi - ni.

The image shows a musical score for an alto voice part. It consists of seven staves of music. The first staff begins with a treble clef, a 4/4 time signature, and a key signature of one flat (B-flat). The music is written in a simple, melodic style with lyrics underneath. Measure numbers 65, 70, 75, 80, 85, 90, 95, and 100 are indicated above the staves. The lyrics are: 'sis, o - san - na in ex - cel - sis, o - san - na in ex - cel - sis, o - san - na in ex - cel - sis, o - san - na in ex - cel - sis, o - san - na in ex - cel - sis. Be - ne - di - ctus, qui ve - nit in no - mi - ne, in no - mi - ne Do - mi - ni, in no - mi - ne Do - mi - ni, in no - mi - ne, in no - mi - ne Do - mi - ni, in no - mi - ne, in no - mi - ne Do - mi - ni.' The score ends with a double bar line at measure 100.

# Missa Puisque j'ai perdu

## Sanctus - Benedictus

Orlande de Lassus (c.1532-1594)

Altus (part 2 of 4)

Misse decem variis concentibus (Gardano press, Venice, 1588)

San - ctus, \_\_\_\_\_ san - - - - -

ctus, san - - - - - ctus, Do - mi - nus \_\_\_\_\_ De -

- - us Sa - ba - oth, Do - mi - nus \_\_\_\_\_ De - us Sa -

20 - ba-oth, Do - mi - nus De - us Sa - ba - oth. Ple - ni sunt cae - li

30 et ter - ra glo - ri - a tu - - a, \_\_\_\_\_ glo - ri - a

35 tu - a. O - san - na in ex - cel - sis, o - san - na in

40 ex - cel - sis, o - san - na in ex - cel - - - - sis, o -

45 - san - na in ex - cel - - - - sis, o - san - na in ex -

50 cel - sis, o - san - na in ex - cel - sis, o - san -

55 na \_\_\_\_\_ in ex - cel - sis, o - san - na in ex - cel - - - -

60

Musical score for the Sanctus and Benedictus sections. The score is written in bass clef with a 4/2 time signature. It consists of seven staves of music with lyrics underneath. Measure numbers 65, 70, 75, 80, 85, 90, 95, and 100 are indicated above the staves. The lyrics are:

sis, o - san - na in ex - cel - sis, o - san - na in ex -  
 cel - sis, o - san - na in ex - cel - sis, o - san - na in ex - cel -  
 - - - sis, o - san - na in ex - cel - sis. Be - ne - di -  
 - - - ctus, qui ve -  
 - nit in no - mi - ne, in no - mi - ne Do - mi - ni, in  
 no - mi - ne Do - mi - ni, in no - mi - ne, in no - mi - ne  
 Do - mi - ni, in no - mi - ne, in no - mi - ne Do - mi - ni.

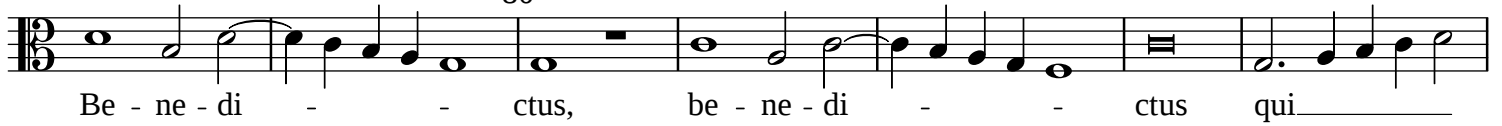


65

70



80

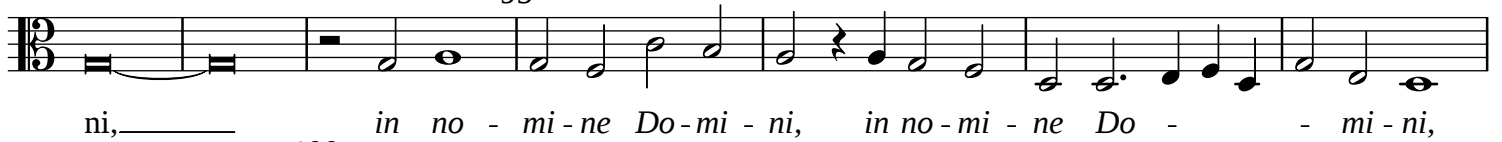


85

90



95



100





# Missa Puisque j'ai perdu

## Sanctus - Benedictus

Orlande de Lassus (c.1532-1594)

Bassus (part 4 of 4)

Misse decem variis concentibus (Gardano press, Venice, 1588)

San - - ctus, san - - ctus, san - -

ctus, san - - ctus, Do - mi - nus De - us

Sa - ba - oth, Do - mi - nus De - us Sa - ba - oth. Ple -

ni sunt cœ - li et ter - ra glo - ri - a tu - a, —

— glo - ri - a tu - a. O - san - na in

ex - cel - sis, o - san - na in ex - cel - sis, o - san - na in ex - cel -

sis, o - san - na in ex - cel - sis, o - san - na in ex -

cel - sis, o - san - na in ex - cel - sis, o - san -

na in ex - cel - sis, o - san - na in ex - cel - sis, in ex - cel -

sis, o - san - na in ex - cel - sis, o - san - na in ex - cel - sis, o - san - na in ex -

70

cel - sis, o - san - na in ex - cel - sis, o - san - na in ex - cel - sis, o -

75

san - na in ex - cel - sis.

2 80 5 85 5 90 5 95 5 100 5