

Who Likes to Love

William Byrd (c.1540-1623)

Superius (part 1 of 5)

Dow Partbooks (Christ Church, 1580s, Oxford MSS 984-988)

Who likes to love let him take heed, and wot ye

why a-mong the gods it is de-creed

that love shall die. And eve-ry wight that takes his

part shall for-feit each a mour-ning heart. And eve-ry

wight that takes his part shall for-feit each a mour-ning heart.

Who Likes to Love

William Byrd (c.1540-1623)

Medius (part 2 of 5)

Dow Partbooks (Christ Church, 1580s, Oxford MSS 984-988)

5

10

15

20

25

30

Who Likes to Love

William Byrd (c.1540-1623)

Medius (part 2 of 5)

Dow Partbooks (Christ Church, 1580s, Oxford MSS 984-988)

5

10

15

20

25

30

Who Likes to Love

William Byrd (c.1540-1623)

Contra (part 3 of 5)

Dow Partbooks (Christ Church, 1580s, Oxford MSS 984-988)

5

10

15

20 1

25

30 1

Who Likes to Love

William Byrd (c.1540-1623)

Contra (part 3 of 5)

Dow Partbooks (Christ Church, 1580s, Oxford MSS 984-988)

5

10

15

20 1

25

1 30

Who Likes to Love

William Byrd (c.1540-1623)

Tenor (part 4 of 5)

Dow Partbooks (Christ Church, 1580s, Oxford MSS 984-988)

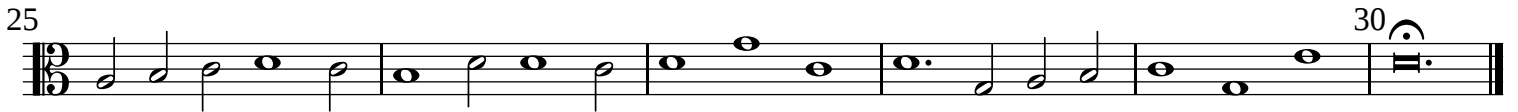
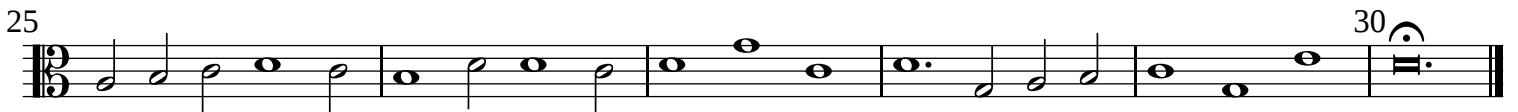
Musical score for Tenor (part 4 of 5) of 'Who Likes to Love' by William Byrd. The score is written in treble clef with a 2/4 time signature. It consists of five staves of music, with measure numbers 5, 10, 15, 20, 25, and 30 indicated at the beginning of their respective staves. The music features a mix of quarter, eighth, and sixteenth notes, along with rests and accidentals. The piece concludes with a double bar line at measure 30.

Who Likes to Love

William Byrd (c.1540-1623)

Tenor (part 4 of 5)

Dow Partbooks (Christ Church, 1580s, Oxford MSS 984-988)



Who Likes to Love

William Byrd (c.1540-1623)

Bassus (part 5 of 5)

Dow Partbooks (Christ Church, 1580s, Oxford MSS 984-988)

5

10

15

20

25

30