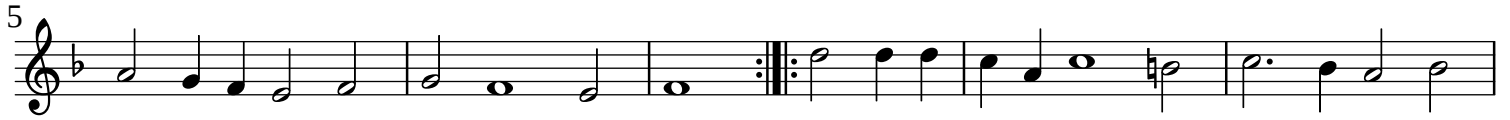


Sinfonia I à 4

Salamone Rossi (c.1570-1630)

Canto (part 1 of 4)

Il primo libro delle sinfonie ... (Venice, 1607)



Sinfonia I à 4

Salamone Rossi (c.1570-1630)

Alto (part 2 of 4)

Il primo libro delle sinfonie ... (Venice, 1607)

8

5

10

8

Sinfonia I à 4

Salamone Rossi (c.1570-1630)

Alto (part 2 of 4)

Il primo libro delle sinfonie ... (Venice, 1607)

5

10

Sinfonia I à 4

Salamone Rossi (c.1570-1630)

Alto (part 2 of 4)

Il primo libro delle sinfonie ... (Venice, 1607)



Sinfonia I à 4

Salamone Rossi (c.1570-1630)

Tenore (part 3 or 4)

Il primo libro delle sinfonie ... (Venice, 1607)

8

5

10

Sinfonia I à 4

Salamone Rossi (c.1570-1630)

Tenore (part 3 or 4)

Il primo libro delle sinfonie ... (Venice, 1607)

5

10

Sinfonia I à 4

Salamone Rossi (c.1570-1630)

Basso (part 4 of 4)

Il primo libro delle sinfonie ... (Venice, 1607)

The image shows two staves of music in bass clef with a key signature of one flat (B-flat) and a time signature of 4/2. The first staff begins with a repeat sign and contains measures 1 through 8. A fermata is placed over the final measure of the first staff. The second staff begins with a repeat sign and contains measures 9 through 16. A measure rest of 10 measures is indicated above the start of the second staff. The music consists of eighth and quarter notes, with a final whole note on the C below middle C.