

Sinfonia II à 4

Salamone Rossi (c.1570-1630)

Canto (part 1 of 4)

Il primo libro delle sinfonie ... (Venice, 1607)

The image displays a musical score for the vocal part of Salamone Rossi's Sinfonia II à 4. It is presented on three staves in G major and 2/4 time. The first staff shows the vocal line starting with a treble clef and a C-clef on the first line. The second staff begins at measure 5 and includes a first ending bracket with a '1' above it. The third staff begins at measure 10 and concludes with a double bar line.

Sinfonia II à 4

Salamone Rossi (c.1570-1630)

Alto (part 2 of 4)

Il primo libro delle sinfonie ... (Venice, 1607)

5

10

#

Sinfonia II à 4

Salamone Rossi (c.1570-1630)

Alto (part 2 of 4)

Il primo libro delle sinfonie ... (Venice, 1607)

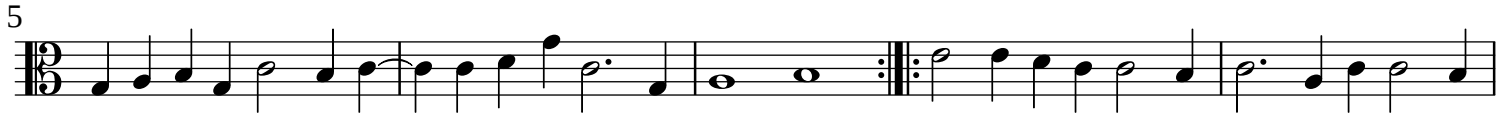
The image shows a musical score for the Alto part (part 2 of 4) of Salamone Rossi's Sinfonia II à 4. The score is written in G major (one sharp) and 4/2 time. It consists of two staves of music. The first staff begins with a treble clef, a key signature of one sharp (F#), and a 4/2 time signature. The music starts with a whole note G4, followed by a half note A4, a whole note B4, and a whole note C5. The second staff begins with a bass clef, a key signature of one sharp (F#), and a 4/2 time signature. The music starts with a whole note G3, followed by a half note A3, a whole note B3, and a whole note C4. The score includes various musical notations such as notes, rests, and bar lines, and is numbered with '5' and '10'.

Sinfonia II à 4

Salamone Rossi (c.1570-1630)

Tenore (part 3 or 4)

Il primo libro delle sinfonie ... (Venice, 1607)



Sinfonia II à 4

Salamone Rossi (c.1570-1630)

Basso (part 4 of 4)

Il primo libro delle sinfonie ... (Venice, 1607)

5

10